



JOHN
RUSKIN
COLLEGE

ORBITAL SOUTH COLLEGES



SUCCESS STARTS HERE

2024-25 FULL-TIME
COURSE GUIDE



VOCATIONAL COURSES
T LEVELS
APPRENTICESHIPS
ACCESS TO HE

APPLY
FOR
YOUR
PLACE
TODAY





SCAN ME

OPEN EVENT

Our Open Events are the perfect opportunity to find out all the information you need to take your next steps!

Saturday 7 October 2023	10am – 1pm
Thursday 9 November 2023	4:30pm – 7:30pm
Wednesday 21 February 2024	4:30pm – 7:30pm
Thursday 20 June 2024	4:30pm – 7:30pm

CONNECT WITH US ON SOCIALS!

See what's going on at the College today by following us on social media.

Book online at www.johnruskin.ac.uk/events

WHAT'S INSIDE

ABOUT THE COLLEGE

- 02** OPEN EVENT DATES
- 04** ORBITAL SOUTH COLLEGES
- 05** WHY CHOOSE JRC?
- 06** STUDENT SUPPORT
- 08** FINANCIAL SUPPORT
- 82** HOW TO FIND US

STUDENT LIFE

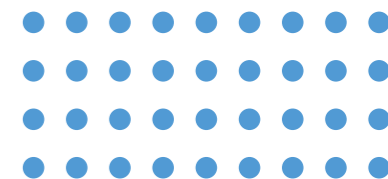
- 12** ENRICHMENT
- 13** STUDENT UNION

COURSE OPTIONS

- 10** FINDING THE RIGHT COURSE
- 14** APPRENTICESHIPS
- 16** T LEVELS
- 18** HIGHER EDUCATION
- 78** HOW TO APPLY

COURSES ON OFFER

- 20** APPLIED SCIENCE
- 24** AVIATION, TRAVEL & TOURISM
- 28** BUSINESS, ACCOUNTING & IT
- 34** CONSTRUCTION
- 42** CREATIVE ARTS
- 46** EARLY YEARS & CHILDCARE
- 50** ENGINEERING
- 54** HAIR, BEAUTY, MAKE-UP & SPA
- 62** HEALTH & SOCIAL CARE
- 66** PUBLIC SERVICES & SPORT
- 70** LIFE SKILLS – ESOL
- 74** LIFE SKILLS – SEND



ORBITAL SOUTH COLLEGES



Orbital South Colleges comprising East Surrey College, John Ruskin College and Reigate of School of Art is a leading Further Education group, trusted by schools and employers across Surrey, West Sussex and south London.

Together, our Colleges form a substantial college group in the south east. From June 2022, the Group also includes Orbital South Colleges University Centre as the umbrella organisation for our Higher Education provision.

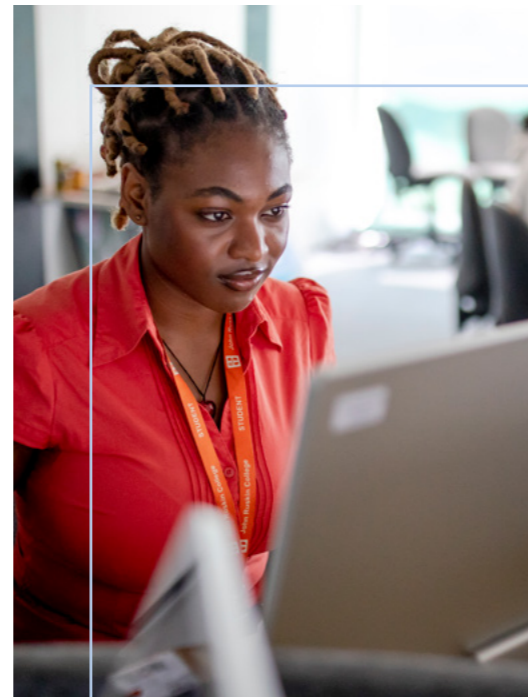
OUR MISSION

To provide inspirational, inclusive and high-quality education and training which:

- Empowers individuals
- Creates a talent pipeline for employers
- Enriches our local and wider communities

OUR VALUES

- Quality
- Innovation
- Aspiration
- Openness
- Responsibility
- Clarity



WHY CHOOSE JRC?

Much more than just a college!

Your College life doesn't just mean achieving a new qualification. Studying at JRC will provide you with a whole range of skills and experiences to prepare you for your next steps, whether they are progressing within education or employment. Here are a few examples of why you should join us!

STATE-OF-THE-ART FACILITIES

We've developed high quality, industry standard facilities helping to inspire and grow the skills needed for a career within any sector.

Whatever your passion, we've got the specialist resources and equipment that will help you to succeed including:

- A state-of-the-art Construction Skills Training Centre
- Digital Media suite
- Photography studio
- Commercial on-site Hair, Beauty & Spa salon
- Fully equipped Science labs
- Simulation nursery facility
- Specialist gym, sports hall and football pitch

ACCREDITATION AND AWARDS

The College has been accredited with several awards including the full Matrix National quality kitemark, recognising our standards in delivering impartial and confidential information, advice and guidance. The College has also been awarded the Mayor's Construction Academy (MCA) Quality Mark. The MCA mark identifies and recognises high-quality construction skills training providers around London, and sets a high bar for construction skills training provision.

HIGH QUALITY TEACHING

All our teaching staff have in depth knowledge and expertise in their fields ensuring you get the best from your time at College. Our tutors are here to encourage and support you as you explore and develop, keeping you motivated and inspired through a range of teaching methods.

EXCELLENT PROGRESSION

In Summer 2022 our students achieved 87.1% pass rate on our Level 3 vocational courses. Positive destination was high, with 98% of students progressing to University, employment or an Apprenticeship.

COLLABORATIONS

We work with external organisations such as Palace for Life Foundation (the charitable arm of Crystal Palace FC), which provides a mentoring programme to students and Kazzum and Sphera to provide additional value to our ESOL students.



STUDENT SUPPORT



We're passionate about supporting you to succeed, and we're here to help make your time here rewarding and enjoyable.

CLIENT SERVICES

When you apply and enrol at JRC, our dedicated Client Services team will be available throughout the year to help and support you.

They're on hand to offer you impartial Information, Advice and Guidance (IAG) across a variety of areas, including:

- Course information, applications and enrolment
- Progression options and careers advice
- Financial information, advice and guidance
- Careers events and Higher Education fairs
- Higher Education and University support
- Safeguarding, counselling and mentoring support

ADDITIONAL LEARNING SUPPORT

Additional support can be provided if you have a diagnosed learning difficulty or disability.

If you have an Education, Health, and Care Plan (EHCP), learning difference, disability or other support need please let us know when you apply. We will ask you for information about your specific needs so we can plan a programme of support with you. Support options may include making reasonable adjustments to facilities and resources

Our Client Services and Student Support teams are on hand to advise and support you during your time at College.

or putting in place specific support which might include access to a learning support assistant or specialist study support sessions.

If additional support is required then a Learning Support Assistant may be allocated to work with you in class or you may be referred for specialist study support sessions.

WE CAN PROVIDE:

- Access to assistive technology and software
- Assessments for exam access arrangements
- Dyslexia screening alongside recommended strategies for independent progress in learning
- Sensory support for hearing and visual needs
- Neurodiversity support
- Quiet space

Let us know your needs by ticking the appropriate boxes on your application form and discussing this fully at your interview.



PERSONAL TUTOR

Once you join you'll be allocated a personal tutor who will keep you updated and support you to achieve your full potential.

Your personal tutor will help you set goals, give guidance and advice on your career options including Apprenticeships, Higher Education or job applications.

SAFEGUARDING

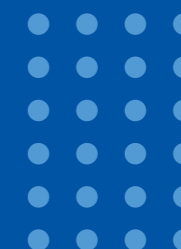
Keeping you safe is our top priority. All our staff are trained in safeguarding to help ensure our College is a safe place for you to study. There are many routes for students to access support both in-person and online.



Our Client Services team are always happy to help! Please call 020 8651 1131



We're Matrix accredited which means our staff are trained to nationally recognised standards and all enquiries will be dealt with impartially and confidentially.



We're committed to promoting the importance of taking care of your mental health and wellbeing.

Our Wellbeing Hub is full of useful links and tips for maintaining your mental health and wellbeing while working and studying.

www.johnruskin.ac.uk/wellbeing-hub



Careers Advice and Guidance

The Careers team offer support to help you with career planning and preparing for your key steps towards employment and work readiness:

- Exploring career pathways
- Improving your job search
- Identifying your transferable skills
- CVs & job applications
- Support with UCAS applications

www.johnruskin.ac.uk/about-careers-hub



FINANCIAL SUPPORT

**A HELPING HAND IF YOU NEED IT!
HAPPY TO HELP ANYTIME.**

There are a number of financial support options available to you depending on your age, level of study and circumstances.

UNDER 19?

If you are under the age of 19 on 31 August 2024 and you meet the eligibility criteria, your course is FREE.

You may be required to pay a resource fee and educational visit costs, however financial support is available for those who need it (subject to family income level).

19 AND OVER?

Depending on the qualifications you have already gained, tuition and/or exam fees may be payable. If you are aged 19-23 on 31 August 2024 and are studying your first full Level 2 or Level 3 qualification, then you may not have to pay tuition or exam fees.

If you're 19+, you have not achieved a full Level 3 qualification and the course you are applying for is on the National Skills Fund (NSF) list, then you may also not have to pay tuition or exam fees.



For Level 2 qualification courses and below, you may not have to pay tuition or exam fees if you are unemployed and receiving a state benefit, or you are working and are on a low income (exact criteria to be confirmed by the Education and Skills Funding Agency (ESFA) in May 2024).

If you are aged 19+ studying a Level 3 qualification and are not entitled to any other waivers, you will normally have to pay course fees. Or if available, you can apply for an Advanced Learner Loan (applicable to adults studying at Level 3 or higher). The loans are managed by the Student Loans Company, and further information can be found at www.slc.co.uk.

If you are using the Advanced Learner Loan to pay for an Access to HE course, once you have successfully completed your Higher Education course, the Student Loans Company will write off the amount outstanding on the loan.



FINANCIAL SUPPORT

Students from low income households, including those on benefits, may be eligible for financial support through one of our Bursary support schemes. Students who are classified as a vulnerable learner may also be eligible.

Following a needs assessment, students may be eligible for financial support towards; childcare costs, resource/materials fees, kit and uniform, essential educational visits, free school meals, travel expenses and more.

Application forms are available online at www.johnruskin.ac.uk or from our Bursary Coordinator, who can provide detailed information relevant to you and will assess your application to see if you are eligible for financial support.

One-to-one support is available with our Bursary Officer who can give confidential information and advice about student loans, funding, bursaries and more.

Financial support may be available (subject to household income) to help cover the cost of course-related costs such as course equipment, books, lunch at college, uniforms, visits and travel expenses.

NEED MORE INFO?

You may be eligible for funding even if your personal circumstances are not mentioned above. Call our Bursary Officer on 020 8651 1131 or email studentbursary@osc.ac.uk.

ENGLISH & MATHS

HOW WE SUPPORT YOU

GCSE Maths and English are essential qualifications and form part of our Full-time programmes at John Ruskin College. Whatever your future holds it is vital that you know how to communicate effectively and how to work with numbers. These skills are an integral part of everyday life, and when applying for a job or College course you will often be asked to provide evidence that you have mastered them. Therefore they are vital to your future success in progressing to other courses and in gaining employment.

We offer a variety of ways to support your learning both in and outside the classroom, through mentoring classes, revision breakfast clubs and fun competitions.



[www.johnruskin.ac.uk/
full-time/english-and-maths](http://www.johnruskin.ac.uk/full-time/english-and-maths)

FINDING THE RIGHT COURSE

UNLOCK YOUR POTENTIAL ON A COURSE YOU LOVE!

We offer courses across a range of subject areas at various levels to suit your strengths, taking you to the next level. This section is designed to help you find the right course.

FUNCTIONAL SKILLS

Functional skills are the fundamental skills you need for work and your personal life. They can be studied as standalone qualifications or as a stepping stone to GCSEs and support progression to higher levels. You are eligible to study functional skills if you are:

- 16+, have left compulsory Full-time education or do not have an up-to-date English or Maths qualification at Level 2 (such as a GCSE)
- Between the ages of 16-18 and are studying a Full-time course

ENGLISH FOR SPEAKERS OF OTHER LANGUAGES (ESOL)

If English isn't your first language, ESOL courses cover speaking, listening, reading and writing. You will be assessed before starting, to ensure you are placed on the right course level.

GCSEs

Good grades at GCSE level can make the difference when it comes to employment and opportunities for progression. They are the main qualifications taken by 14-16 year olds, and are highly valued by schools, colleges and employers.

Maths and English are particularly valued by employers and are important to be able to progress onto higher levels.

APPRENTICESHIPS AND NVQs

An NVQ is an industry related qualification that you can study at College or at work as part of an Apprenticeship. You will learn practical, work-related tasks to help you develop the skills and knowledge to do a job effectively. You will be assessed to see the areas that need to be developed to complete your qualification. See page 15.

BTECS

BTECs are designed for those interested in a particular sector or industry, offering a mix of theory and practical learning, including an element of work experience or a work-related project and are equivalent to 3 A Levels.

You could study a BTEC at Level 2 or 3, either as a standalone course, alongside an academic qualification or as part of a wider programme (such as an Apprenticeship).

T LEVELS

T Levels are the new career-focused qualification which gets students career ready with a focus on work placements and classroom/workshop learning. They are equivalent to 3 A Levels and will help you step straight into your chosen career, Apprenticeship or Degree. See page 16.

YOUR STUDY PROGRAMME

As well as your chosen qualification, you'll have the opportunity to:

- Gain your English and Maths qualifications (if not already achieved at GCSE grade 9-4/A*-C)
- Benefit from group and one-to-one tutorial support
- Gain work experience and develop important employability skills
- Enjoy a variety of enrichment activities
- Get support with your CV, applying for a job or university and preparing for interviews



Our Client Services team are always happy to help! Please call 020 8651 1131

Qualifications featured in this guide may be subject to change due to changes by awarding bodies or funding changes from the ESFA (Education & Skills Funding Agency).

YOUR CURRENT QUALIFICATIONS/ GRADES

BTEC National/ Extended Diploma
NVQ Level 3/4
Access to HE Course
T Level
A Level

BTEC National/ Extended Diploma
NVQ Level 3
T Level
Access to HE Course
A Level

4 or 5 GCSEs Grade 9-4 (A*-C)
NVQ Level 2
BTEC Level 2
Extended Certificate
Intermediate Apprenticeship

4 GCSEs Grade 9-3 (A*-D)
Functional Skills
Foundation Level (Merit)
NVQ Level 1
BTEC Level 1 Diploma (Merit)

GCSEs Grade 2 (E)/
Functional Skills
Employability/
Work Skills Programme
Progression Award
Basic Skills Entry Level 3

No or few formal qualifications, or if you are looking to improve your basic skills

JOIN AT LEVEL

5

4

3

2

1

ENTRY LEVEL

TYPES OF COURSES YOU CAN PROGRESS ONTO

Foundation Degree
Degree
Diploma of Higher Education
Degree Apprenticeship
Professional Qualification

Certificate of Higher Education
Higher National Diploma/Certificate
Higher Apprenticeship
Professional Qualification
Level 4 Diploma

A Level
T Level
Access to HE Course
BTEC Extended Diploma
BTEC Level 3 Award/
Certificate/Diploma
Advanced Apprenticeship

BTEC Level 2 Diploma
BTEC Level 2
Extended Certificate
Intermediate Apprenticeship
GCSE English and Maths

Foundation Level Course
BTEC Level 1 Award/
Certificate/Diploma
Level 1 Diploma
Functional Skills
English, Maths and IT

Functional Skills
English & Maths
Progression Award
Skills for Working Life Programme
Vocational Studies
Life Skills Programme



MAKE THE MOST OF YOUR COLLEGE EXPERIENCE

Taking part in an enrichment activity is a great way of meeting new people, learning some new skills and having fun!



ACTIVITY PROGRAMME

You'll find a wide variety of morning, lunchtime and early evening activities you can participate in outside of your academic timetable.

This might involve taking part in sporting activities such as badminton, football, self defence or gaming; joining the Student Union committee to design the enrichment programme for the academic year; working on community or charity work; or volunteering your time to support the local community.



NEED MORE INFO?

To find out more about enrichment visit www.johnruskin.ac.uk/enrichment

We work hard to provide a wide range of interesting activities for you to take part in, but we are always open to new suggestions and ideas of activities you would like to do. All activities are free and open to all students.

FRESHERS' FAIR

During your first term at College, you'll be invited to our Freshers' Fair event. Here you will find various exhibitors giving out information, advice and guidance about volunteering and employment opportunities. You'll also have the chance to sign up to various clubs and societies, pick up lots of freebies and get involved in fun activities.

- There's a wide variety of free activities outside of your academic timetable
- Meet new friends, learn a new skill and have fun!
- Join in, boost your confidence and develop your personal skills



GET INVOLVED AND HAVE YOUR SAY!

RUN BY STUDENTS FOR STUDENTS, THE JOHN RUSKIN COLLEGE STUDENT UNION IS HERE TO REPRESENT THE STUDENT VOICE IN THE COLLEGE

The SU serves as a channel of communication between the student body and the College Senior Leadership Team. This helps evolve the College experience for all, ensuring students' views and opinions are included every step of the way.

The SU also supports the local community through the voluntary work they do and causes they support. We work hard to provide a wide range of interesting activities for you to take part in, but we are always open to new suggestions and ideas of activities you would like to do.



CONNECT WITH US ON SOCIAL MEDIA

Follow our social media accounts and you'll be able to keep up-to-date with what we've been up to.

Be sure to FOLLOW, LIKE, COMMENT and SHARE our posts!



OUR AIMS AND RESPONSIBILITIES

- To ensure the student body has a running voice throughout the College
- Fundraising for charity and for extra facilities for students
- To strengthen the community spirit within the College

NEED MORE INFO?

To find out more about the Student Union visit www.johnruskin.ac.uk/student-union



WHO CAN BECOME AN APPRENTICE?

You can start an Apprenticeship if:

- You're aged 16+
- You live in England
- You're not in full-time education

YOUR NEXT STEPS

After completing an Apprenticeship, you could continue to train for an Advanced, Higher or Degree Level Apprenticeship, or a related vocational qualification. Alternatively, you could head to university or take a professional qualification that leads to a specialist job role in your chosen industry.

WANT TO FIND OUT MORE? GET IN TOUCH

To receive further guidance contact our friendly **Employer Services** team. We are often developing new programmes to keep up-to-date with industry changes.

**As voted by Apprentices in the RateMyApprenticeships Top 50 Training Providers for 2023-2024*

CALL US

020 8651 1131 or email us
at employerservices@johnruskin.ac.uk



BROWSE OUR EXTENSIVE RANGE OF APPRENTICESHIPS:

AVIATION

- Aviation Ground Operative Level 2
- Aviation Ground Specialist Level 3

BUSINESS, FINANCE & ACCOUNTING

- Chartered Manager Level 6
- Customer Service Practitioner Level 2
- Customer Service Specialist Level 3
- Operations/Departmental Manager Level 5
- Team Leader/Supervisor Level 3
- Professional Accounting/Taxation Technician Level 4

COMPUTING, DIGITAL & IT

- Digital Marketer BSc (Hons) Degree Level 6
- Information Communication Technician Level 3
- Software Developer Level 4
- Software Development Technician Level 3

CARING SERVICES

- Adult Care Worker Level 2
- Early Years Educator Level 3
- Early Years Practitioner Level 2
- Lead Adult Care Worker Level 3

CONSTRUCTION

- Advanced Carpentry & Joinery (Site Carpentry) Level 3
- Bricklayer Level 2
- Building Services Design Technician Level 3
- Building Services Engineering Installer Level 2
- Building Services Engineering Technician Level 4
- Carpentry & Joinery (Bench Joinery) Level 2
- Carpentry & Joinery (Site Carpentry) Level 2
- Chartered Surveyor Level 6
- Civil Engineering Technician Level 3

- Construction Design & Build Level 4
- Construction Ground Worker Level 2
- Construction Quantity Surveying Level 4
- Construction Site Engineering Technician Level 4
- Construction Site Manager Level 6
- Construction Site Supervisor Level 4
- Costruction Support Technician Level 3
- Groundworker Level 2
- Installation Electrician/Maintenance Electrician Level 3
- Painter & Decorator Level 2
- Plumbing & Domestic Heating Technician Level 3
- Property Maintenance Operative Level 2
- Surveying Technician Level 3

ENGINEERING

- Engineering Fitter Level 3
- Electrical Power Network Engineer Level 4
- Embedded Electronic Systems Level 6
- Engineering Manufacturing Technician Level 4
- Engineering Operative Level 2
- Engineering Technician Level 3
- General Welder (Arc Processes) Level 2

MAINTENANCE & OPERATIONS

- Engineering Technician Level 3
- Science Industry Maintenance Technician Level 3

HAIRDRESSING & BARBERING

- Hair Professional (Barbering) Level 2
- Hair Professional (Hair) Level 2

TEACHING

- Teaching Assistant Level 3
- Learning & Skills Teacher Level 5

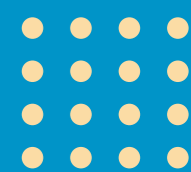
Apprenticeships

Earn while you learn, build your skills and gain a nationally recognised qualification.

WHAT IS AN APPRENTICESHIP

Apprenticeships are designed for students of all ages (16+) who have left full-time education and are in employment. You will be employed by a company and earn a wage whilst you learn, build your skills and gain a nationally recognised qualification.

To start an Apprenticeship programme you will need to secure employment. Training is flexible, with the majority being completed 'on the job' and the rest provided by our team at College.



T-LEVELS

THE NEXT LEVEL QUALIFICATION

A career-focused alternative to A Levels.

WHAT ARE T LEVELS?

T Levels are new Level 3 courses following on from GCSEs and are equivalent to a Level 3 vocational study programme or studying 3 A Levels. These two year courses have been developed in collaboration with employers and businesses so that the content taught meets the needs of industry and prepares you for work, further training or study.

T Levels offer you a mixture of college-based learning and 'on-the-job' experience during an industry placement of at least 315 hours (approximately 45 days).

ARE T LEVELS RIGHT FOR YOU?

This next level qualification is right for you if you:

- Have just finished your GCSEs
- Want to get into a skilled job
- Like a mixture of classroom and practical learning
- Want the knowledge, skills and experience to get the job you want
- Are interested in spending time with employers to try out different job roles

FIND OUT MORE

See course pages for more information or view online www.johnruskin.ac.uk/tlevels

HOW DO THEY WORK?

You'll spend 80% of your time in College and 20% on an industry placement, where you'll gain the knowledge and skills employers are looking for and develop a better understanding of the workplace.

T Levels consist of the following compulsory elements:

1. An approved technical qualification – core theory specialist skills and knowledge specific to your chosen occupation/career path.
2. An industry placement with an employer of at least 45 days – providing the knowledge and experience to progress to skilled employment, further study or a Higher Apprenticeship.
3. You will need 5 GCSEs grade 9-4 (A*-C) including English and Maths; or a Level 2 diploma/extended certificate to apply at John Ruskin College.

CAN I GET UCAS TARIFF POINTS?

Yes. Your T Level will be worth UCAS points so you can use the qualification when applying for Higher Education.

WHAT IS THE DIFFERENCE BETWEEN A T LEVEL AND AN APPRENTICESHIP?

T Levels are based on the same standards as Apprenticeships which are designed by employers.

However, T Levels differ from Apprenticeships as T Levels prepare students for work, further training or further study. T Level students will spend most of their time in College.



- A blend of classroom learning with an industry placement
- Nationally-recognised qualification, with the top T Level grade (Distinction*) equivalent to 3 A Levels at A*
- Gain vocational skills for progression to skilled employment, higher study or an Apprenticeship



SUBJECTS AVAILABLE FOR 2024

ACCOUNTING

*Accounting

BUSINESS AND ADMINISTRATION

Management & Administration

CONSTRUCTION

Design, Surveying & Planning for Construction (Surveying & Design for Construction & the Built Environment)

ENGINEERING AND MANUFACTURING

*Design & Development for Engineering & Manufacturing (Electrical & Electronic Engineering)

Design & Development for Engineering & Manufacturing (Mechanical Engineering)

DIGITAL

Digital Production, Design & Development

EDUCATION AND CHILDCARE

Education & Childcare

HEALTH AND SCIENCE

Health

CREATIVE ARTS

Hair

*Only available at East Surrey College, Redhill



HIGHER EDUCATION

ORBITAL SOUTH COLLEGES UNIVERSITY CENTRE IN REDHILL OFFERS A DIVERSE RANGE OF HIGHER EDUCATION COURSES DESIGNED TO PROVIDE SKILLS AND KNOWLEDGE REQUIRED TO TAKE YOUR CAREER TO THE NEXT LEVEL.

We are proud to announce that the Department for Education (DfE) has approved the title of Orbital South Colleges University Centre for our growing Higher Education provision.

- Excellent facilities
- Great transport links from London, Croydon and across the South East
- Industry experienced tutors
- Lower fees than universities
- Small class sizes
- Flexible entry requirements



OUR QUALIFICATIONS INCLUDE:

- Degree Programmes (BA (Hons) Top-Up/BSc (Hons))
- Foundation Degrees (FdA/FdSc)
- Higher National Diplomas (HNDs)
- Higher National Certificates (HNCs)
- Higher and Degree Apprenticeships
- Professional Courses

WHO WE WORK WITH

Our Foundation and Degree programmes are awarded by the University of Chichester, recently ranked 21st by the Guardian University League Table 2022. We also work with selected institutions to provide high quality teaching and qualifications.



Our Foundation Degree and Honours programmes are awarded by the University of Chichester.



ART, DESIGN & MEDIA

Make-Up, Special Effects & Hair for Media & Performance FdA / BA (Hons) Top-Up

BUSINESS, ACCOUNTING & IT

Digital Technologies HNC*
Internet Software Development FdSc

CONSTRUCTION

Construction & The Built Environment:
Building Services Engineering HNC / HND Top-Up
Civil Engineering HNC / HND Top-Up
Construction HNC
Construction Management – HND Top-Up
Surveying HNC / HND Top-Up
Quantity Surveying BSc (Hons)

EARLY YEARS

Early Years FdA

ENGINEERING

Electrical/Electronic Engineering HNC / HND Top-Up
Electrical Power Networks & Distribution Engineering HNC
Embedded Electronic Engineering HND Top-Up Engineering (General) HNC
Engineering (General) HNC / HND Top-Up
Mechanical Engineering HNC / HND Top-Up

SPORT & PUBLIC SERVICES

Public Services HNC
Sport & Exercise Science HNC

HOW TO APPLY
For more information and to apply visit our website: www.esc.ac.uk/higher-education or call our Client Services team on: 01737 788444

APPLIED SCIENCE

Are you interested in an exciting career in a scientific role? Do you want to be at the forefront of the latest scientific research underpinning modern life? Then a course in the exciting world of science is for you!

By studying an Applied Science course with us, you will broaden your scientific knowledge and skills in biology, chemistry and physics; whilst developing specialist skills that can be linked to specific areas within the industry. You'll get hands-on experience in our purpose-built science laboratory equipped with all the industry-standard equipment you'll need.

Applied science opens up a wide range of career opportunities in various industries where scientific principles are put into practice. Here's a list of potential jobs and career paths you could consider after completing your studies in applied science.

CAREER PATHS:

- Laboratory Technician
- Quality Control Analyst
- Research Assistant
- Environmental Technician
- Food Scientist/Technologist
- Pharmaceutical Sales Representative
- Clinical Research Coordinator
- Technical Writer
- Biotechnologist
- Chemical Analyst
- Materials Scientist
- Data Analyst
- Forensic Scientist
- Medical Laboratory Technician
- Renewable Energy Technician

THINKING ABOUT AN APPRENTICESHIP?

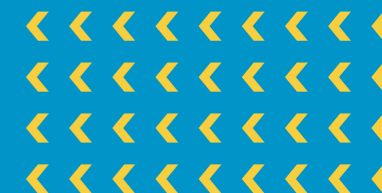
Check out the range of subjects we offer from Level 2 to Higher and Degree Level – page 14-15!



DEVELOP TECHNICAL SKILLS AND KNOWLEDGE IN OUR STATE-OF-THE-ART LABORATORY

OPPORTUNITIES TO WORK COOPERATIVELY AND TAKE PART IN WORK-BASED PROJECTS

HEAR FROM EXTERNAL INDUSTRY SPEAKERS, SUCH AS FORENSIC SCIENTISTS AND CLINICAL NURSES/DOCTORS.





APPLIED SCIENCE
LEVEL 2 EXTENDED CERTIFICATE
1 YEAR

ENTRY REQUIREMENTS

5 GCSEs grade 9-3 (A*-D) including English, Maths and Science.

Assessment: Coursework, practical assessments and external examinations.

This course will develop your understanding of chemistry, biology and physics and how they relate to real-life applications in a science workplace. You will have the opportunity to perform a variety of experimental work, learn how to work safely within a laboratory environment and how to use Maths and statistics to analyse experimental data. This is a practical, work-related course, where you'll develop a responsible and cooperative approach, often working in small groups and presenting your find

STUDIES INCLUDE

- Scientific skills
- The living body
- Principles of Science
- Chemistry and our Earth
- English and Maths (if not already achieved at GCSE grade 9-4/A*-C)

PROGRESSION

Upon successful completion, you'll have the chance to progress directly onto our Applied Science Level 3 Extended Diploma. With further study and training you may also pursue a career in laboratory based work such as a lab technician, forensic scientist, environmental scientist or in other science settings.

APPLIED SCIENCE
LEVEL 3 EXTENDED DIPLOMA
2 YEARS

168 UCAS Points (Grade D*D*D*)

ENTRY REQUIREMENTS

5 GCSEs grade 9-4 (A*-C) including English, Maths and Science or: BTEC Level 2 Technical in Laboratory Science/BTEC NQF Level 2 Extended Certificate/BTEC QCF Level 2 Diploma Merit/Distinction and GCSEs grades 9-4 (A*-C) in English, Maths and Science.

Assessment: Coursework, practical and external examinations.

This is a theoretical, practical and work-related course, developing the necessary skills, knowledge and understanding for both biomedical and forensic sciences.

This course will include relevant talks from industry professionals and visits to places of scientific interest to support your progression into a forensic or biomedical field.

STUDIES INCLUDE

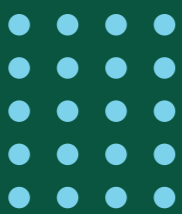
- Science investigation skills
- Principles and applications of science
- Contemporary issues in science
- Biomedical science
- Forensic evidence, collection and analysis

PROGRESSION

Progression to degrees in medical science or forensic science is possible after completion of your course. Alternatively you may also progress directly into employment in the science and health-related industry.



AVIATION, TRAVEL & TOURISM



CAREER PATHS:

- Aviation
- Airline Pilot
- Flight Attendant
- Aircraft Maintenance Technician
- Air Traffic Controller
- Aerospace Engineer
- Aviation Management
- Aviation Safety Inspector
- Aviation Dispatcher
- Aviation Consultant
- Airline Customer Service Representative
- Cabin Crew
- Flight Attendant
- In-Flight Manager
- Cabin Crew Trainer
- Cabin Crew Recruitment Specialist
- In-Flight Sales
- Cabin Crew Coordinator
- Airline Customer Service
- Aviation Safety Inspector
- Corporate Flight Attendant
- Airport Ground Operations
- Travel & Tourism
- Travel Agent
- Tour Operator
- Hotel Manager
- Event Planner
- Cruise Director
- Destination Marketing Manager
- Travel Writer/Blogger
- Cultural Heritage Manager
- Hospitality Manager
- Travel Consultant

Do you have a passion for travel, great people skills and a flair for adventure? Start your journey with an Aviation or Travel & Tourism course.

Studying travel and tourism or aviation can lead to exciting and diverse career opportunities within the travel, hospitality, and aviation industries. Our experienced staff will help you to develop a range of desirable, transferable skills allowing you to progress into your chosen industry. John Ruskin College maintains excellent links with local employers, providing you with opportunities to hear from industry leaders and gain valuable insights into this sector.

THINKING ABOUT AN APPRENTICESHIP?

Check out the range of subjects we offer from Level 2 to Higher and Degree Level – page 14-15!



GAIN INDUSTRY KNOWLEDGE FROM OUR SPECIALIST TUTORS

WE HAVE FANTASTIC LINKS WITH LOCAL EMPLOYERS SUCH AS JET2, GATWICK AIRPORT AND EASYJET

TRIPS, VISITS AND WORKSHOPS WILL GIVE YOU FIRST-HAND INSIGHT AND EXPERIENCE OF THE SECTOR





CABIN CREW, TRAVEL & TOURISM

LEVEL 2 DIPLOMA | 1 YEAR

ENTRY REQUIREMENTS

5 GCSEs grade 9-3 (A*-D) including English and Maths.

Assessment: Some written assignment tasks, short tests, observations and a portfolio of evidence to cover coursework.

This course has been designed especially for those who wish to pursue a career in the airline industry as cabin crew. You will learn how to co-ordinate a safe flight: preparing the cabin, getting the passengers aboard, demonstrating safety procedures, as well as learning how to deal with emergencies and develop your knowledge in our very own aircraft seating.

STUDIES INCLUDE

- Airline health, safety and security
- Emergency procedures
- Roles of cabin crew
- Airport arrival processes
- English and Maths (if not already achieved at GCSE grade 9-4/A*-C)

PROGRESSION

Once you have completed this course, you will have the necessary skills and knowledge to successfully become employed as air cabin crew or airport operations staff or progress onto our Level 3 Extended Diploma courses within Aviation or Travel & Tourism.

TRAVEL & TOURISM

LEVEL 3 EXTENDED DIPLOMA
2 YEARS

168 UCAS Points (Grade D*D*D*)

ENTRY REQUIREMENTS

5 GCSEs grade 9-4 (A*-C) including English and Maths or: a Level 2 Extended Certificate/Level 2 Diploma Merit/Distinction and GCSEs grade 9-4 (A*-C) in English and Maths.

Assessment: Some written assignment tasks, observations and a portfolio of evidence to cover coursework.

This practical, work-related course is ideal if you are seeking employment within the travel and tourism industry in roles such as cabin crew, travel agents and tour operators.

You will be set projects and assignments based on realistic work-place situations, activities and demands. You will also take part in work experience or a work based project during non-college days.

STUDIES INCLUDE

- Travel and tourism
- UK travel and tourism destinations
- European destinations
- Worldwide destinations
- The cruise industry
- Preparing for employment
- Working as a holiday representative
- Customer service

PROGRESSION

You will have the chance to progress straight into employment in career roles such as a holiday representative, tour guide, cabin crew or cruise ship staff.

Or you may wish to start an apprenticeship or progress onto a higher level qualification in travel & tourism management or study at degree level at university.



BUSINESS, ACCOUNTING & IT

Study the dynamic world of Business, IT, or Accounting! In these comprehensive courses, you will embark on a journey that takes you beyond the surface of these disciplines and into the very heart of how modern organisations operate and thrive.

Whether you're a budding entrepreneur, a tech enthusiast, or an aspiring financial guru, this course will equip you with the essential knowledge and skills needed to navigate through the world of work.

Studying business, accounting, or IT opens up a wide range of job opportunities and career paths. Here's a list of potential jobs you could pursue after completing your studies or following additional studies in these fields:

CAREER PATHS:

- › Business
- › Marketing Manager
- › Sales Representative
- › Human Resources Specialist
- › Management Consultant
- › Business Analyst
- › Entrepreneur/Business Owner
- › Operations Manager
- › Business Development Manager
- › Supply Chain Manager
- › Public Relations Specialist
- › Accounting
- › Certified Public Accountant (CPA)
- › Financial Analyst
- › Auditor
- › Forensic Accountant
- › Tax Consultant/Advisor
- › Corporate Controller
- › Financial Planner
- › Cost Accountant
- › Internal Auditor
- › Information Technology (IT)
- › Software Developer
- › Network Administrator
- › Data Analyst/Scientist
- › Cybersecurity Analyst
- › IT Project Manager
- › Database Administrator
- › IT Consultant
- › Web Developer
- › Cloud Solutions Architect
- › IT Support Specialist



Remember that these are just a few examples, and each field offers a wide array of specialised roles and career paths. Your personal interests, strengths, and additional skills will also play a significant role in determining the specific job you pursue within these fields.

THINKING ABOUT AN APPRENTICESHIP?

Check out the range of subjects we offer from Level 2 to Higher and Degree Level – page 14-15!



OPPORTUNITIES TO WORK ON 'LIVE' PROJECTS WITH LOCAL EMPLOYERS AND ENTREPRENEURS

REGULAR CV, CAREER DEVELOPMENT AND UCAS SUPPORT

IN-PERSON AND ONLINE EMPLOYER SEMINARS AND PRESENTATIONS ACROSS VARIOUS INDUSTRIES





ACCOUNTING

LEVEL 3 | 2 YEAR

➤ **T LEVEL** See page 16 for more info

ENTRY REQUIREMENTS

Entry requirements (can you copy over the entry requirements paragraph from the Digital T Level on page 35 please but just remove 'and IT/Computing' in the second sentence. Should jsut ben English and Maths. The the rest about the BTEC stuff is correct.)

Assessment: Written examinations and externally set projects.

This qualification requires a mandatory 315 hours (minimum) of industry placement.

During the 2-year programme, students will develop the core knowledge and skills that are needed for entry to a range of accounting occupations.

STUDIES INCLUDE

- The business environment
- Careers within the finance and accounting professions
- Regulation
- Professionalism and ethics/equality, diversity and inclusion
- Security and risk
- Professional services
- Fundamentals of law
- Fundamentals of financial accounting
- Technology
- Data driven innovation/analytics and design thinking
- Research skills
- Project/change management and administration
- Fundamentals of financial accounting (accounting pathway content)

PROGRESSION

You can progress into the finance industry as a Finance Officer, Payroll Manager, Payroll Administrator or Accounting Technician.

BUSINESS

LEVEL 1 INTRODUCTORY DIPLOMA | 1 YEAR

ENTRY REQUIREMENTS

No formal qualifications are required. However you must show through initial assessment that you are working towards English and Maths at Level 1. A positive attitude is needed and a willingness to undertake a range of College activities with a focus on excellent attendance and punctuality.

Assessment: Coursework

This qualification introduces business practices and gives you the breadth of essential knowledge, understanding and skills needed for today's business industry. You will also acquire a variety of transferable skills that will help in all aspects of life, not just in the world of business.

You will also take part in work experience and a work based project during non-college days.

STUDIES INCLUDE

- Developing a personal progression plan
- Being organised
- Working with others
- Researching a topic
- Branding a product
- Presenting a business idea
- Recording income and expenditure
- English and Maths (if not already achieved at GCSE grade 9-4/A*-C)

PROGRESSION

You may progress onto our Business Level 2 course, or into employment roles such as Business Support Assistant, Junior Administrator and Client Services Clerk.

BUSINESS

LEVEL 2 EXTENDED CERTIFICATE 1 YEAR

ENTRY REQUIREMENTS

5 GCSEs grade 9-3 (A*-D) including English and Maths or: BTEC Level 1 Diploma (Merit) and GCSE grades 9-3 (A*-D) in English and Maths.

Assessment: Coursework and computer based exams (externally set).

You'll develop awareness of new aspects of the business world and learn about the important skills required by employers, providing stepping stones for entry into employment.

Our tutors deliver practical activities, presentations and involvement with local businesses wherever possible. You will also complete work experience and a work based project during non-college days.

STUDIES INCLUDE

- Enterprise in the business world
- Finance for business
- Principles of marketing
- Recruitment, selection and employment
- Law and consumer rights
- English and Maths (if not already achieved at GCSE grade 9-4/A*-C)

PROGRESSION

On successful completion you may continue onto the Business Level 3 qualification if you would like to gain the entry requirements for university or improve your future job prospects.

Some students have previously decided to progress directly onto an apprenticeship or employment in Office Admin or Marketing Assistant roles.

BUSINESS

LEVEL 3 EXTENDED DIPLOMA 2 YEARS

168 UCAS Points (Grade D*D*D*)

ENTRY REQUIREMENTS

5 GCSEs grade 9-4 (A*-C) including English and Maths or: BTEC NQF Level 2 Extended Certificate Merit/Distinction and GCSEs grade 9-4 (A*-C) in English and Maths

Assessment: Coursework and computer based exams (externally set).

A practical, work focused course which develops the necessary skills, knowledge and understanding to provide a sound, basic business education. The course is continuously assessed through assignments, project tasks and case studies.

A number of trips are organised during the year to relate your learning to the world of work. The course uses practical activities, presentations and involvement with local businesses wherever possible. You will also find and complete work experience during non-college days.

STUDIES INCLUDE

- Finance
- Marketing (including Digital Marketing)
- Event Management
- International Business
- Business Management
- Law
- Marketing Research

PROGRESSION

This course offers opportunities to progress to employment in a wide range of job roles across the business and digital industries.

Alternatively you may choose to go into higher education at ESC to study a Management FdA, or start an apprenticeship.



MEET AKEELES

Business Management – Level 3

Why did you choose this course?

I've been interested in starting my own business since a young age, inspired by my parents having their own food preparation and rental businesses in Mauritius.

I started on the Level 1 Vocational Studies course but found it too easy so jumped to Business Level 3 as I knew it would be useful.

What do you enjoy most about your course?

It's always fun, never boring and I enjoy being with my classmates.

One of my favourite modules was Employment Law as I plan to be a lawyer in the future. I also enjoyed the Developing a Marketing Campaign topic.

MANAGEMENT & ADMINISTRATION

LEVEL 3 | 2 YEARS

➤ **T LEVEL** See page 16 for more info

168 UCAS Points (Grade D*D*D*)

ENTRY REQUIREMENTS

5 GCSEs grade 9-4 (A*-C) including English, Maths and IT/Computing; or BTEC Level 2 Diploma/Extended Certificate Merit/Distinction in ICT/Computing and GCSEs grade 9-4 (A*-C) in English and Maths.

Assessment: Exams, practical projects, presentations and externally examined coursework tasks.

During the course, you will develop the core knowledge and skills needed for entry into a range of business occupations by developing an understanding of a range of issues relating to the sector.

There will be a mixture of classroom-based teaching and learning and 'on-the-job' work as this qualification requires a mandatory 315 hours (minimum) industry placement which you must undertake and complete in order to be successfully certified.

STUDIES INCLUDE

- Organisational cultures and values
- Different types of stakeholders
- Project management theories
- Quality and compliance
- Testing software and hardware

PROGRESSION

On completion you can progress onto higher education in the form of a HNC, HND or degree. Alternatively, you may also wish to progress onto an apprenticeship or head straight into employment in a business role.

INFORMATION TECHNOLOGY

LEVEL 1 INTRODUCTORY DIPLOMA | 1 YEAR

ENTRY REQUIREMENTS

4 GCSEs grade 9-2 (A*-E) including English and Maths.

Assessment: Coursework.

This qualification introduces basic ICT practices and gives you a starting platform of essential ICT knowledge. This will also provide the starting knowledge for entry into the IT sector and prepare you for further learning or training at a higher level.

STUDIES INCLUDE

- Developing digital information using IT
- Using digital communications technologies
- Creating a website
- Creating a computer program
- Developing a digital product
- Creating a digital animated graphic
- English and Maths (if not already achieved at GCSE grade 9-4/A*-C)

PROGRESSION

Enter into an entry or junior level job in business/IT related roles such as a Business Administrator, or it could lead to progression onto the ICT Level 2 Extended Certificate course or an IT Apprenticeship.

INFORMATION TECHNOLOGY

LEVEL 2 EXTENDED CERTIFICATE 1 YEAR

ENTRY REQUIREMENTS

5 GCSEs grade 9-3 (A*-D) including English and Maths or: BTEC Level 1 Diploma/Extended Diploma and GCSEs grade 9-3 (A*-D) in English and Maths

Assessment: Coursework and computer based exams

This is a practical, work-related course which develops the necessary skills, knowledge and understanding to progress within the IT sector.

This qualification offers you experience of basic programming skills for software development, practical experience in developing and creative elements in graphics and web design.

You will also take part in work experience or a work based project during non-college days.

STUDIES INCLUDE

- The online world
- Technology systems
- A digital portfolio
- Creating digital graphics
- Software development
- Mobile phone applications
- English and Maths (if not already achieved at GCSE grade 9-4/A*-C)

PROGRESSION

On successful completion of this course, you may progress onto the Level 3 course.

Alternatively, you can enter employment or an apprenticeship in an IT/computing environment.

COMPUTING

LEVEL 3 EXTENDED DIPLOMA 2 YEARS

168 UCAS Points (Grade D*D*D*)

ENTRY REQUIREMENTS

5 GCSEs grade 9-4 (A*-C) including English and Maths or: BTEC NQF Level 2 Extended Certificate / BTEC QCF Level 2 Diploma Merit/Distinction and GCSEs grade 9-4 (A*-C) in English and Maths.

Assessment: Coursework and computer based exams.

If you are interested in a career in computing in specialist areas such as systems analysis, software development or technical support then this course is for you. This is a practical, work-related course, which develops the necessary skills, knowledge and understanding required for the IT industry.

STUDIES INCLUDE

- Principles of computer science
- Software design and development
- Computer games development
- Mobile app development
- Computer networking

PROGRESSION

You can progress onto a higher level qualification, higher apprenticeship, degree level course such as the foundation degree in Internet software development or enter the world of employment.

DIGITAL PRODUCTION, DESIGN & DEVELOPMENT

LEVEL 3 | 2 YEARS

➤ **T LEVEL** See page 16 for more info

168 UCAS Points (Grade D*D*D*)

ENTRY REQUIREMENTS

5 GCSEs grade 9-4 (A*-C) including English, Maths and IT/Computing; or BTEC Level 2 Diploma/Extended Certificate Merit/Distinction in ICT/Computing and GCSEs grade 9-4 (A*-C) in English and Maths.

Assessment: Exams, practical projects, presentations and externally examined coursework tasks.

This qualification requires a mandatory 315 hours (minimum) industry placement

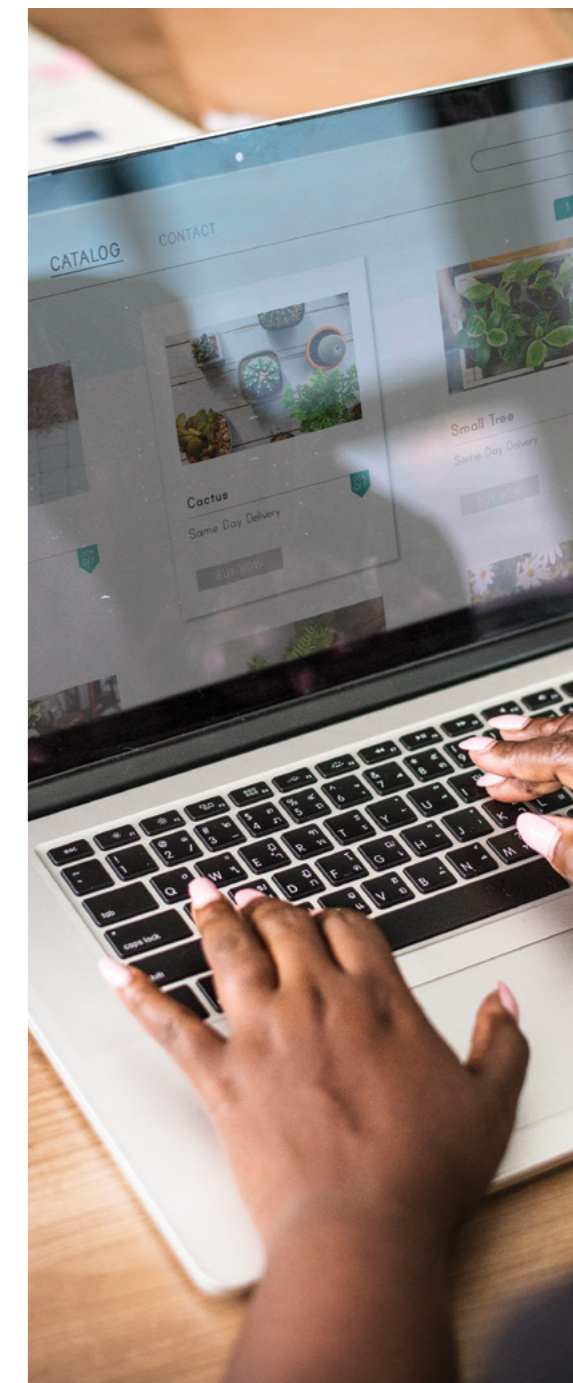
This qualification has been developed for those who want to progress to a career in the digital sector, with a focus on software design and development. You will learn the skills and knowledge needed to design, implement and test software while also considering ethical principles and legal or regulatory requirements, and how to maintain and support software and analyse problems.

STUDIES INCLUDE

- The digital environment and security
- Introduction to programming
- Impact of digital technologies
- Software design principles

PROGRESSION

You can progress onto a higher level qualification, higher apprenticeship, degree level course or employment in roles such as a UX Designer or Programme Developer.



CONSTRUCTION

Are you looking for a practical based career where you're working with your hands? Want to learn in a dedicated industry standard skills centre? Then a course in the construction industry could be for you.

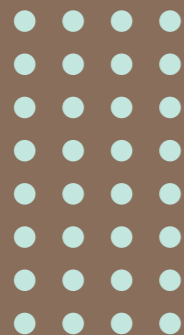
Our industry-experienced tutors will support you in developing the necessary practical skills and theoretical knowledge you need to excel in your chosen industry.

The College has strong links with employers, giving you the opportunity to hear from industry leaders and gain additional experience alongside your course.

Future career paths in these sectors will likely evolve with technological advancements, sustainable practices, and innovative construction techniques, creating opportunities for professionals to specialise in green construction, Building Information Modelling (BIM), renewable energy integration, and smart home automation.

CAREER PATHS:

- Construction
- General Contractor
- Project Manager
- Construction Manager
- Site Supervisor
- Estimator
- Construction Labourer
- Heavy Equipment Operator
- Safety Manager
- Quality Control Inspector
- Construction Engineer
- Bricklayer



- Masonry Contractor
- Brick and Stone Mason
- Block Mason
- Restoration Mason
- Masonry Estimator
- Masonry Labourer
- Tuck pointer
- Carpenter
- Finish Carpenter
- Cabinetmaker
- Framing Carpenter
- Trim Carpenter
- Furniture Carpenter
- Formwork Carpenter
- Restoration Carpenter
- Joiner
- Electrician
- Electrical Contractor
- Journeyman Electrician
- Master Electrician
- Electrical Engineer
- Electrical Technician
- Lineworker (Powerline Technician)
- Control Technician
- Wiring Technician

Remember that job titles and responsibilities can vary depending on location, company, and specific projects. Each sector offers a wide range of job opportunities with varying levels of experience and specialisation.

THINKING ABOUT AN APPRENTICESHIP?

Check out the range of subjects we offer from Level 2 to Higher and Degree Level – page 14-15!



WORKING ALONGSIDE LOCAL EMPLOYERS DELIVERING EDUCATIONAL TALKS VIRTUALLY AND IN-PERSON

DEDICATED CONSTRUCTION SKILLS CENTRE WITH WORKSHOPS FOR ELECTRICAL INSTALLATION, BRICKWORK, PLUMBING, PAINTING AND DECORATING AND CARPENTRY & JOINERY

COURSES ARE DEVELOPED AROUND INDUSTRY NEEDS IN COLLABORATION WITH LOCAL EMPLOYERS AND PROFESSIONALS





CONSTRUCTION MULTI-SKILLS

LEVEL 1 DIPLOMA | 1 YEAR

ENTRY REQUIREMENTS

Few formal qualifications, ideally 4 GCSEs grade 9-1 (A*-G).

Note: Appropriate uniform/PPE is required in workshops and classrooms.

Assessment: Online City & Guilds tests and portfolio of evidence.

This qualification is designed for those seeking an introductory route into the construction industry. You will be introduced to the initial skills, knowledge and understanding required to enter the construction sector across areas such as painting and decorating, carpentry and brickwork; helping you prepare to progress to higher level related qualifications.

STUDIES INCLUDE

- Brickwork
- Carpentry
- Painting and decorating
- Safe working practices in construction
- Health and safety
- Building methods and construction technology
- English and Maths (if not already achieved at GCSE grade 9-4/A*-C)

PROGRESSION

If you complete the course successfully, you will be in a position to apply for an Apprenticeship or progress onto a Level 1 or 2 diploma across a variety of disciplines at JRC.

Those who successfully complete the course will be able to also support a skilled worker as a Labourer on a construction site, after gaining a Construction Skills Certification Scheme (CSCS) card.

ELECTRICAL INSTALLATION

LEVEL 2 DIPLOMA | 1 YEAR

ENTRY REQUIREMENTS

4 GCSEs grade 9-4 (A*-C) including Science, English and Maths.

Note: Appropriate uniform/PPE is required in workshops and classrooms.

Assessment: Online City & Guilds tests and a portfolio of evidence.

This qualification provides you with the underlying knowledge and abilities needed to progress in electrical installation and will allow you to support a fully qualified electrician on site.

Using a mix of classroom-based and project work, you will learn how to fabricate containment, install and terminate cables, inspect and test electrical installations, diagnose and rectify electrical faults, as well as learning the underpinning industry regulations and electrical science.

STUDIES INCLUDE

- Health and safety in building services
- Principles of electrical science
- Electrical installations technology
- Installation of wiring systems and enclosures

PROGRESSION

You will have the necessary skills and knowledge to work and carry out basic electrical operations.

Many of our students have secured successful employment working alongside a fully qualified electrician or have gone onto an apprenticeship within the industry.

DESIGN, SURVEYING & PLANNING FOR CONSTRUCTION

(SURVEYING & DESIGN FOR CONSTRUCTION & THE BUILT ENVIRONMENT) LEVEL 3
2 YEARS

T LEVEL See page 16 for more info

168 UCAS Points (Grade D*D*D*)

ENTRY REQUIREMENTS

5 GCSEs grade 9-4 (A*-C) including English and Maths; or BTEC Level 2 Diploma/Extended Certificate in Construction and GCSEs grade 9-4 (A*-C) in English and Maths.

Assessment: Practical projects and externally set coursework/exams.

This technical qualification is intended for those who want to progress to a career in the construction sector, focusing on surveying and design.

You will cover specialist units such as how to measure, analyse and design in the built environment. Whilst on your employer led work placement you will complete an employer set project, which is an essential part of the overall qualification.

STUDIES INCLUDE

- Health and safety
- Building and digital technology
- Mathematical techniques
- Sustainability
- Project management and law

PROGRESSION

On successful completion of your T Level, you can progress onto a job/apprenticeship in construction in your chosen occupational specialism, a relevant Higher National Certificate/Diploma at ESC or construction degree programme at university.



MEET ISABEL

Construction – Level 1

Why did you choose this course?

I have always helped my grandad and dad with building small things around the house. During lockdown, my uncle hired me to become his labourer to do an extension on a house. When I left school, I wanted to become a plumber - that is why I decided to do construction in College.

What is your plan after you finish this course?

I would like to do an Apprenticeship. I want to be a plumber as some older people might prefer to have a female in their home.

What aspects of the course have you enjoyed so far?

I've loved the change from school! My favourite aspect of the course is learning about health and safety and using the different tools.

CARPENTRY & JOINERY

LEVEL 1 DIPLOMA | 1 YEAR

ENTRY REQUIREMENTS

No formal qualifications are required. However you must show through initial assessment that you are working towards English and Maths at Level 1.

Note: Appropriate uniform/PPE is required in workshops and classrooms

Assessment: Online City & Guilds tests and a portfolio of evidence

This qualification provides the fundamental practical skills required for employment and/or career progression in carpentry or joinery.

You will learn how to prepare and use carpentry and joinery power tools and how to develop the craft and hand-skills.

STUDIES INCLUDE

- Producing basic woodworking joints
- Principles of building construction, information and communication
- Health and Safety
- Maintain and use carpentry and joinery hand tools
- Prepare and use carpentry and joinery portable power tools
- English and Maths (if not already achieved at GCSE grade 9-4/A*-C)

PROGRESSION

On successful completion of this course, you may progress onto the Level 2 course.

Alternatively, you can enter employment or an apprenticeship as a Labourer on a construction site, after gaining a Construction Skills Certification Scheme (CSCS) card.

CARPENTRY & JOINERY

LEVEL 2 DIPLOMA | 1 YEAR

ENTRY REQUIREMENTS

Carpentry & Joinery Level 1 Diploma and GCSEs grade 9-3 (A*-D) in English and Maths.

Note: Appropriate uniform/PPE is required in workshops and classrooms.

Assessment: Online City & Guilds tests and a portfolio of evidence.

After learning the basic skills taught at Level 1, this Level 2 qualification focuses on the woodwork activities essential to working as a site carpenter.

You will cover the key topics of health and safety, communication and working in the construction industry, and learning about erecting and fitting timber, creating woodworking joints, frames, doors and windows.

STUDIES INCLUDE

- First fix flooring and roofing, frames, partitions and stairs
- Principles of construction
- Carrying out second fixing operations
- Carrying out carpentry maintenance
- Maintain and use fixed bench saw
- English or Maths (if not both already achieved at GCSE grade 9-4/A*-C)

PROGRESSION

You will have the necessary skills and knowledge to work and carry out basic carpentry operations either on building sites or at a manufacturing facility.

You may wish to go on and study one of the new T Level qualifications we have on offer or take on an apprenticeship from our extensive offer in Construction.

PAINTING & DECORATING

LEVEL 1 DIPLOMA | 1 YEAR

ENTRY REQUIREMENTS

No formal qualifications are required. However you must show through initial assessment that you are working towards English and Maths at Level 1

A positive attitude is needed and a willingness to undertake a range of College activities with a focus on excellent attendance and punctuality

Note: Appropriate uniform/PPE is required in workshops and classrooms

Assessment: Online City & Guilds tests and a portfolio of evidence

This course will prepare you for a career in the Painting & Decorating industry, covering basic preparation and skills.

STUDIES INCLUDE

- Preparing surfaces for decoration
- Applying paint systems by brush and roller
- Applying wallpaper
- Producing decorative finishes
- English and Maths (if not already achieved at GCSE grade 9-4/A*-C)

PROGRESSION

Those who successfully complete this course can progress onto our Painting & Decorating Level 2 course.

You can also enter employment or an apprenticeship in a junior or entry level role in Painting & Decorating or within the Construction industry in general.

PAINTING & DECORATING

LEVEL 2 DIPLOMA | 1 YEAR

ENTRY REQUIREMENTS

Painting & Decorating Level 1 Diploma and GCSEs grade 9-3 (A*-D) English and Maths.

Note: Appropriate uniform/PPE is required in workshops and classrooms.

Assessment: Online City & Guilds tests and a portfolio of evidence.

Building on the skills learnt on the Level 1 programme, you will extend your skills and knowledge with more challenging activities, to enhance the knowledge, skills and confidence required to work competently within the painting and decorating industry.

STUDIES INCLUDE

- Preparing surfaces for decoration
- Applying paint systems by brush and roller to a variety of surfaces
- Applying foundation and plain papers
- Producing specialist decorative finishes
- Applying and creating colour
- English and Maths (if not already achieved at GCSE grade 9-4/A*-C)

PROGRESSION

After successfully passing the Level 2 Diploma in Painting & Decorating, you may wish to consider expanding your knowledge working on building sites, completing basic painting and decorating activities, or start an apprenticeship from our extensive offer in Construction.



STATE-OF-THE-ART CONSTRUCTION SKILLS CENTRE

Our on-site Construction Skills Centre was purpose built for our wide range of construction courses.

Featuring high spec facilities this new addition complements our existing workshops and supports our students whilst they develop their specialist trades.

John Ruskin College employs supportive and industry experienced staff and as part of the Orbital South Colleges Group (OSC) has links with many industry leaders such as Osborne, Buxton and Kier.

OSC have been awarded the Mayor's Construction Academy (MCA) Quality Mark which identifies and recognises high-quality construction skills training providers around London, and sets a high bar for construction skills training provision.



PLUMBING LEVEL 1 DIPLOMA | 1 YEAR

ENTRY REQUIREMENTS

No formal qualifications are required. However you must show through initial assessment that you are working towards English and Maths at Level 1. A positive attitude is needed and a willingness to undertake a range of College activities with a focus on excellent attendance and punctuality.

Note: Appropriate uniform/PPE is required in workshops and classrooms

Assessment: Online City & Guilds tests and a portfolio of evidence

This qualification develops the skills that employers are looking for, and introduces you to the practical plumbing skills required.

You will learn about the installation and maintenance of plumbing systems through a combination of practical experience and theory.

STUDIES INCLUDE

- Understanding the structure of the industry
- Different types of materials used in the plumbing industry
- Basic pipe bending and soldering skills
- Basic pipe runs for hot and cold systems
- English and Maths (if not already achieved at GCSE grade 9-4/A*-C)

PROGRESSION

Completing this course will assist in your progression to become a fully qualified Plumber and help you develop and practise the skills required for employment and career progression. You'll also be able to progress onto our Plumbing Level 2 Diploma or as a Plumbing Apprentice.

PLUMBING LEVEL 2 DIPLOMA | 1 YEAR

ENTRY REQUIREMENTS

Plumbing Level 1 Diploma and at least 1 GCSE grade 9-4 (A*-C) in English or Maths.

Note: Appropriate uniform/PPE is required in workshops and classrooms.

Assessment: Online City & Guilds tests and a portfolio of evidence.

This level 2 qualification builds on the skills learnt at Level 1. You will learn about the key methods, materials, processes and principles used in plumbing; allowing you to carry out installations of kitchen and sanitary appliances including: toilets, wash basins, sinks and cisterns.

STUDIES INCLUDE

- Electrical principles and processes for building services
- Scientific principles for domestic, industrial and commercial plumbing
- Standard plumbing processes
- Cold water and domestic hot water systems
- Central heating systems
- English or Maths (if not both already achieved at GCSE grade 9-4/A*-C)

PROGRESSION

On successful completion you'll have a solid understanding and experience in plumbing work and will be able to start a career at entry level specialising in plumbing, or working as an apprentice with an employer in the construction industry. Alternatively you may wish to study a new level 3 T Level qualification.

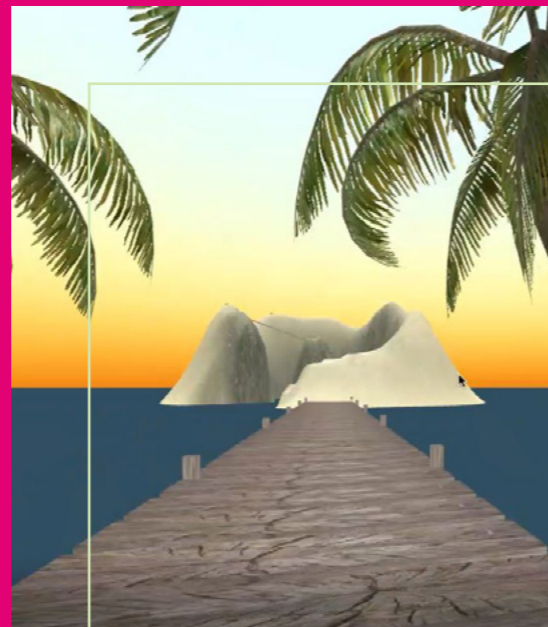


CREATIVE ARTS

Are you ready to explore your creative side and share your artistic talent with the world? Our exciting courses will challenge you to develop your creative skills even further and excel in your chosen discipline.

You'll have the chance to access our spacious facilities including state-of-the-art Apple Mac and multimedia suites – the perfect place for you to express yourself.

Our courses equip you with the skills and knowledge to display what you've learnt through your artistic portfolio and to help prepare you for further education, University or the world of work.



CAREER PATHS:

- › Animator
- › Games Designer
- › Graphic Designer
- › Illustrator
- › Photographer
- › Product Designer
- › Curator
- › Artist
- › Interior Designer
- › Storyboard Artist
- › Art Director
- › Studio Runner

THINGS TO NOTE:

There are some associated costs to these courses. Speak with client services to see if you are eligible to support.

THINKING ABOUT AN APPRENTICESHIP?

Check out the range of subjects we offer from Level 2 to Higher and Degree Level – page 14-15!



CREATIVE ASSIGNMENTS & PROJECTS TO HELP BUILD A PORTFOLIO

STATE-OF-THE-ART MULTIMEDIA SUITES

COURSES TAUGHT BY INDUSTRY PROFESSIONALS, HIGHLY SKILLED IN THEIR FIELD





ART & DESIGN

LEVEL 2 FIRST EXTENDED CERTIFICATE | 1 YEAR

ENTRY REQUIREMENTS

5 GCSEs grade 9-3 (A*-D) including Art, English and Maths; or Level 1 Diploma Merit/Distinction and GCSEs grade 9-3 (A*-D) in English and Maths

Assessment: A combination of internally assessed assignments and externally assessed tasks set and marked by Edexcel

This course offers you the chance to experience a wide range of Art & Design principles and techniques in drawing, painting, photography and graphic design.

This course is very hands-on and will help you to develop and unlock your creative potential whilst honing your design skills. You will be introduced to specialist equipment and software to help you succeed and progress to Level 3 courses in the Creative industries.

STUDIES INCLUDE

- Introduction to specialist pathways
- Developing an art & design portfolio
- Visual arts briefs
- Graphic design and photography briefs
- English and Maths (if not already achieved at GCSE grade 9-4/A*-C)

PROGRESSION

After this course you can progress onto one of our Level 3 courses. Alternatively you can start an Apprenticeship or choose from a range of specialist art, design and media jobs.

CREATIVE MEDIA

LEVEL 2

ENTRY REQUIREMENTS

5 GCSEs grade 9-3 (A*-D) that include English and Maths or a Level 1 Diploma at Merit/Distinction and GCSE English and Maths grade 9-3 (A*-D)

Assessment: Assessment will be a combination of coursework and practical assignments/presentations set within each project.

This exciting course provides a broad grounding in sound and moving image and a general introduction to the media industry. It serves as an introductory pathway to Level 3 courses in Film and Television, Sound and Music Production or Photography, providing a solid foundation for a career in the creative industries.

STUDIES INCLUDE

- Introduction to Creative Media Methods and Skills
- Introduction to Production Techniques
- Understanding an Audience in Creative Media Production
- Contextual Research for Creative Media
- Exploring Audio Production and Technology
- Exploring Video Production and Technology
- Exploring Interactive Media Production and Technology
- Personal Project and Presentation in Creative Media Production

PROGRESSION

After this course you can progress onto one of our Level 3 courses. Alternatively you can start an Apprenticeship or choose from a range of specialist art, design and media jobs.



MEET ELI

Art & Design – Level 3

Why did you choose this course?

I didn't do Art at school but I always liked it growing up. Choosing this course was the best thing I have ever done because I get to freely express myself.

What made you decide to study at JRC?

When I came to the open day, I felt so welcomed by everyone. I knew that enrolling at this college was the right decision for me. I saw that students showcased their work and it helped to see this. I visited other colleges but this one stuck out.

What are your future plans?

I have an offer from Goldsmiths, University of London to study Design BA (Hons). I plan to work as a Graphic Designer and one day maybe get into Film.

EARLY YEARS & CHILDCARE

Whether you want to work in a nursery or Children's Centre, become a nanny, or maybe a teaching assistant in a school, having a recognised qualification is essential.

You will benefit from working with experienced tutors, ensuring you get the required support for your success within this sector.

All courses incorporate a work placement which gives you valuable experience of different childcare settings increasing your employability skills for the future.

There are great opportunities for progression into an Apprenticeship, the workplace or onto Higher Education courses at JRC, ESC or University.

CAREER PATHS:

- Teacher Assistant
- Preschool Teacher
- Nursery Assistant
- Childcare Centre Manager
- Childcare Worker
- Playgroup Facilitator
- Nanny
- Early Intervention Specialist
- Child Life Specialist
- Child Development Consultant
- Early Childhood Education Coordinator
- Family Support Worker
- Childcare Business Owner
- Early Childhood Education Researcher
- Parent Educator



SPECIALLY DESIGNED COLLEGE EARLY YEARS AND CHILDCARE UNIFORM

OPPORTUNITIES TO GAIN ON-THE-JOB LEARNING WITH WORK PLACEMENTS IN AN EARLY YEARS SETTING

NATIONALLY-RECOGNISED CHILDCARE CACHE QUALIFICATIONS DEVELOPED BY EXPERTS TO MEET THE NEEDS OF THE SECTOR



Remember that pursuing additional education, certifications, and specialisation within the field of early years and childcare can open up even more opportunities for career growth and advancement.

THINKING ABOUT AN APPRENTICESHIP?

Check out the range of subjects we offer from Level 2 to Higher and Degree Level – page 14-15!



EARLY YEARS PRACTITIONER

LEVEL 2 DIPLOMA (NCFE CACHE)
1 YEAR

ENTRY REQUIREMENTS

5 GCSEs grade 9-3 (A*-D) including English and Maths; or BTEC Level 1 Diploma Merit/Distinction and GCSEs grade 9-3 (A*-D) in English and Maths; or Level 1 Diploma Pass and GCSEs grade 9-3 (A*-D) in English and Maths.

A clean DBS check.

Assessment: Coursework and practical work placements (minimum 250 hours work experience).

This course introduces you to caring for children and young people between 0-5 years, and you'll gain knowledge of working with children up to 7 years.

You will learn how children develop physically and emotionally, as well as how they learn to interact with people. You will need to be working, volunteering or on practical placement to show competence in both knowledge and skills.

STUDIES INCLUDE

- Child development and safeguarding
- Supporting children's behaviour
- Positive environments
- Care routines for babies and young children
- English and Maths (if not already achieved at GCSE grade 9-4/A*-C)

PROGRESSION

Great progression routes working under supervision in a variety of roles such as a Nursery Practitioner or as an apprentice.

Alternatively you may wish to enrol on our new Early Years Educator Level 3 T Level qualification to build on your current skills and knowledge.

EDUCATION & CHILDCARE

LEVEL 3 | 2 YEARS

T LEVEL See page 16 for more info

168 UCAS Points (Grade D*D*D*)

ENTRY REQUIREMENTS

5 GCSEs grade 9-4 (A*-C) including English and Maths; or Level 2 Diploma/Extended Certificate Pass and GCSEs grade 9-4 (A*-C) in English and Maths.

Assessment: Practical projects and externally-set coursework and exams.

You will specialise in early years education and childcare; enabling you to explore the skills, knowledge and behaviours needed to support and promote children's play, early education and foster relationships with children to facilitate their development. This qualification requires a mandatory 750 hours (minimum) industry placement which you must undertake and complete in order to be successfully certified.

STUDIES INCLUDE

- Child development and behaviour
- Safeguarding and wellbeing
- Equality and diversity
- Special Educational Needs and Disability
- Parents, families and carers
- Working with others

PROGRESSION

After successfully completing this course you can progress onto higher education courses such as FdA in Early Years at ESC or a top-up degree in courses such as Early Childhood Studies or Early Years Practice. Alternatively you can use the skills and experience you have gained to start an apprenticeship or employment in the childcare industry.



MEET ALEX

Childcare – Level 3

Why did you choose this course?

I used to coach younger players in my football team and realised I found fulfilment in helping a child to achieve. I wanted to expand on this by getting into teaching.

Have you done any work experience during this course?

I've completed two work placements, I learned about setting routines and finding the best way to help the children develop with their key milestones. It was great to have this experience and it helped me decide my future career plans.

What are your future plans?

I plan to study Primary Education at university then go into the world of Primary Teaching.

ENGINEERING

John Ruskin College is the ideal place for you to start your journey towards an exciting and diverse career in Engineering, whatever your chosen specialism!

We offer a range of Engineering courses which can progress you into the field of engineering.

Learn from our industry-experienced staff and develop the technical skills you need to prepare for your future.

Your course can include trips, talks from industry experts and work experience.

CAREER PATHS:

- › Mechanical Engineer
- › Civil Engineer
- › Electrical Engineer
- › Chemical Engineer
- › Aerospace Engineer
- › Environmental Engineer
- › Structural Engineer
- › Industrial Engineer
- › Automotive Engineer
- › Materials Engineer
- › Robotics Engineer
- › Telecommunications Engineer
- › Mining Engineer
- › Marine Engineer
- › Renewable Energy Engineer
- › Quality Engineer
- › Control Systems Engineer

THINKING ABOUT AN APPRENTICESHIP?

Check out the range of subjects we offer from Level 2 to Higher and Degree Level – page 14-15!

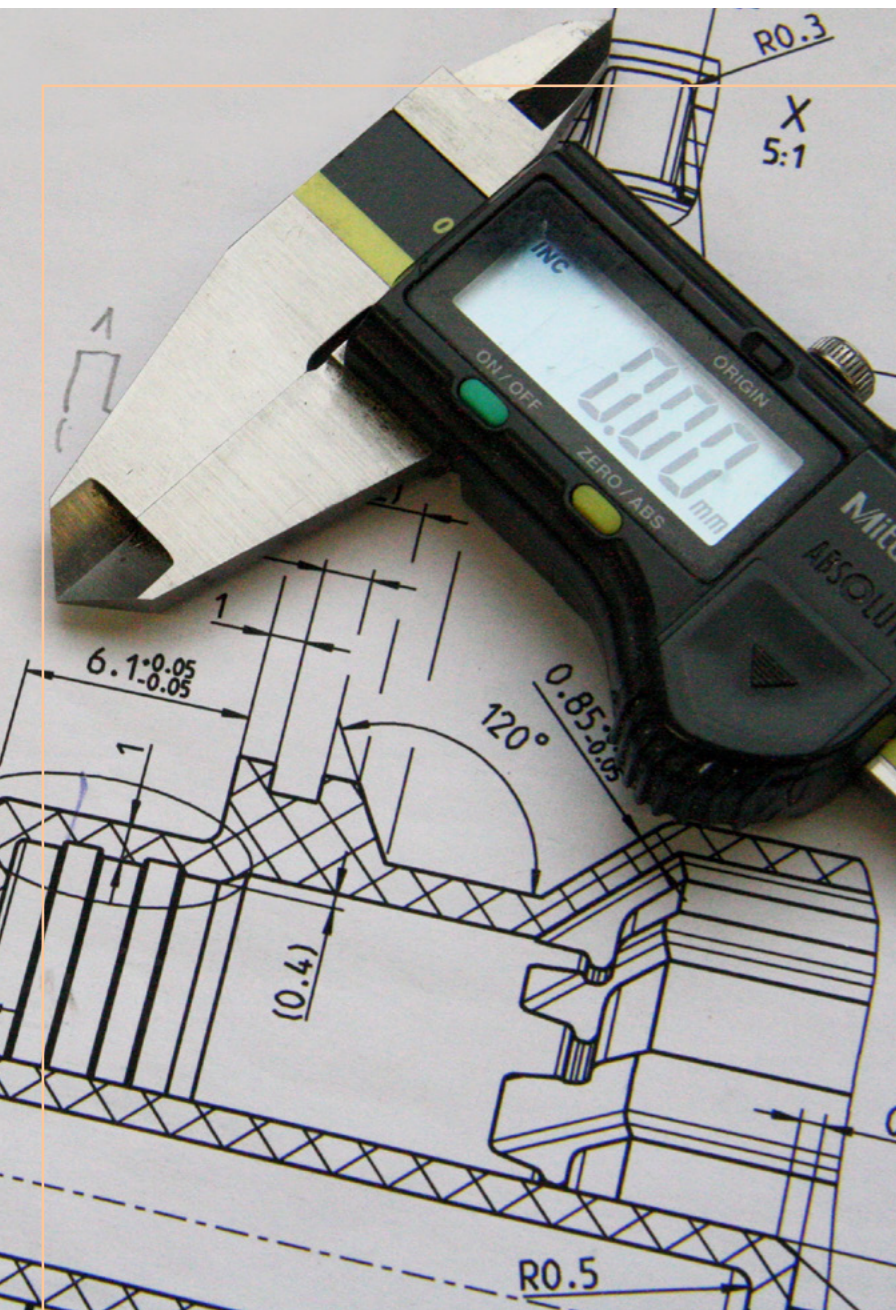


COURSES DELIVERED BY INDUSTRY-EXPERIENCED TUTORS

DEVELOP YOUR ENGINEERING KNOWLEDGE, SKILLS, IMAGINATION AND EXPERIENCE

LEARN WITH INDUSTRY STANDARD SOFTWARE FOR ENGINEERING DESIGN





ENGINEERING

LEVEL 2 | 1 YEAR

ENTRY REQUIREMENTS

4 GCSEs grade 9-3 (A*-D) including Science, English and Maths.

Note: Appropriate uniform/PPE is required in workshops and classrooms.

Assessment: Continuous assessment.

On this Level 2 qualification you will study many aspects of engineering which relate to the design of products and the way the industry works.

You will be introduced to the manufacturing engineering world where you will learn how to use lathes and mills as well as producing Computer Aided Design (CAD) drawings.

STUDIES INCLUDE

- CAD drawing
- Hand fitting
- Using a lathe
- Using a mill
- Introduction to welding
- English and Maths (if not already achieved at GCSE grade 9-4/A*-C)

PROGRESSION

After you have successfully completed this programme, you can choose to stay on at JRC and progress onto our new Level 3 T Level courses, where you will have the chance to work for an employer to develop your skills further.

The course also provides an excellent basis for entry to a wide range of jobs in engineering or further training on an apprenticeship.

ENGINEERING

LEVEL 3 EXTENDED DIPLOMA
2 YEARS

168 UCAS Points (Grade D*D*D*)

ENTRY REQUIREMENTS

5 GCSE grade 9-4 (A*-C) including Science, English and Maths; or Engineering Level 2 Diploma and GCSE grade 9-4 (A*-C) in English and Maths

Assessment: Continuous assessment through assignments

This course is designed to provide you with the skills and knowledge required for the industry and offers you the opportunity to progress to higher level study.

You will study 17 different units, assessed through assignment and practical work with the majority of the units focussed on the mechanical/manufacturing engineering industry.

STUDIES INCLUDE

- Computer aided design
- Pneumatic and Hydraulic systems
- Maintenance and mechanical systems
- Engineering principles
- Engineering product design and manufacture
- Specialist Engineering Project
- Calculus to solve engineering problems

PROGRESSION

On successful completion of this course, you may apply for a University Level course.

You may choose to enter employment or an apprenticeship in a range of engineering roles.

DESIGN & DEVELOPMENT FOR ENGINEERING AND MANUFACTURING

(ELECTRICAL & ELECTRONIC ENGINEERING) LEVEL 3 | 2 YEARS

T LEVEL See page 16 for more info

168 UCAS Points (Grade D*D*D*)

ENTRY REQUIREMENTS

5 GCSEs grade 9-4 (A*-C) including Science, English and Maths; or Level 2 Diploma/Extended Certificate in Engineering and GCSEs grade 9-4 (A*-C) in English and Maths.

Assessment: Practical projects and externally set coursework and exams.

This course is designed to provide you with the core contexts, concepts and theories required for the engineering industry and is ideal for those interested in a career in the electrical/electronic engineering industries. This qualification requires a mandatory 315 hours (minimum) industry placement which will develop your technical skills and allow you to apply your knowledge in a workplace environment.

STUDIES INCLUDE

- Engineering and manufacturing design practices
- Engineering representations
- Maintenance, installation and repair
- Principles of electricity/electronics
- Commercial/financial awareness

PROGRESSION

On successful completion, you can progress onto courses such as Higher National Certificates/Diplomas or top-up degrees at university. Alternatively develop your knowledge on a higher apprenticeship or employment in the engineering sector.



MEET NATHAN

Engineering – Level 2

Why did you choose this course?

I've always enjoyed learning how to construct and manufacture things, so took an interest in this course.

What do you enjoy most about your course?

I enjoy doing group work with my peers and the support from both of my teachers.

What are your future plans?

I have now progressed on to **Design & Development for Engineering and Manufacturing T Level** at JRC and plan to study Engineering at university when I complete this course.

HAIR, BEAUTY, MAKE-UP & SPA

Whether you want to work in a hair and beauty salon, or create looks for TV shows and magazine covers, these courses are made just for you!

Gain hands-on experience in our fully equipped salons and make-up studios, preparing for your industry or entrepreneurial endeavours. Our comprehensive range of courses start from Level 1 upwards. Each course is designed to empower you with the skills and knowledge needed to excel in the dynamic world of hair, beauty or make-up.

CAREER PATHS:

- › Hair Stylist
- › Makeup Artist
- › Esthetician
- › Nail Technician
- › Spa Therapist
- › Salon Manager
- › Beauty Educator/Instructor
- › Cosmetic Sales Representative
- › Freelance Makeup Artist
- › Beauty Blogger/Influencer
- › Product Development Specialist
- › Wedding Stylist
- › Fashion Show Makeup Artist
- › Cruise Ship Spa Staff
- › Special Effects Makeup Artist
- › Beauty Retail Manager

THINKING ABOUT AN APPRENTICESHIP?

Check out the range of subjects we offer from Level 2 to Higher and Degree Level – page 14-15!



INDUSTRY STANDARD MEDIA MAKE-UP WORKSHOPS AND HAIR AND BEAUTY SALONS

TRAIN IN OUR PROFESSIONAL TRAINING SALON OPEN TO THE PUBLIC, STAFF AND STUDENTS

OPPORTUNITIES TO SHOWCASE YOUR WORK AND COMPETE IN COMPETITIONS, BOTH INTERNALLY AND EXTERNALLY





HAIRDRESSING, BARBERING & BEAUTY THERAPY

LEVEL 3 | 2 YEARS

➤ **T LEVEL** See page 16 for more info

ENTRY REQUIREMENTS

5 GCSEs grade 9-4 (A*-C) including English and Maths; or Level 2 Diploma/Extended Certificate Pass and GCSEs grade 9-4 (A*-C) in English and Maths.

Our T Level in Hairdressing, Barbering & Beauty Therapy is a new high-quality, vocational and technical qualification, with a work-focused approach.

On completion of a course, learners will have gained the necessary knowledge, skills, and behaviours to successfully progress into work or higher-level study.

STUDIES INCLUDE

- Hairdressing
- Barbering
- Beauty Therapy

PROGRESSION

Learners will have gained the skills, knowledge and behaviours to go on to work or higher level study.

HAIR & BEAUTY SKILLS

LEVEL 1 DIPLOMA | 1 YEAR

ENTRY REQUIREMENTS

4 GCSEs grade 9-2 (A*-E) including English and Maths.

Assessment: A portfolio of practical work, exams and assignments.

This course is an introduction to the beauty industry for those who wish to prepare to train as a Beauty Therapist.

You will learn the basics of health and safety and professional salon behaviour, developing your communication skills and giving you an insight into the services and treatments provided in professional salons.

You will be taught the different techniques needed to provide mini manicures and salon treatments, including facial treatments and pedicures.

STUDIES INCLUDE

- Introduction to the hair and beauty sector
- Basic manicure treatment
- Basic pedicure treatment
- Health and safety practice in the salon
- Skin care
- Basic make-up application
- English and Maths (if not already achieved at GCSE grade 9-4/A*-C)

PROGRESSION

On successful completion you can progress further by studying our Beauty Therapy, Hairdressing or Hair & Media Make-Up Level 2 Diplomas or seek entry level employment opportunities, for example, as a Salon Assistant.

HAIRDRESSING

LEVEL 2 DIPLOMA | 1 YEAR

ENTRY REQUIREMENTS

5 GCSEs grade 9-3 (A*-D) including English and Maths.

Or: Hairdressing Level 1 Diploma and GCSEs grade 9-3 (A*-D) in English and Maths.

Assessment: A portfolio of practical work, exams and assignments.

Develop your practical techniques in a broad range of women's hairdressing skills to become a Junior Stylist.

During this course you will develop a sound knowledge and understanding of the theory to each unit and gain the employability skills needed to become a successful hairdresser.

STUDIES INCLUDE

- Client consultation for hair services
- Colour and lighten hair
- Cut women's hair
- The art of dressing hair
- The art of colouring hair
- Health and safety practice in the salon
- English and Maths (if not already achieved at GCSE grade 9-4/A*-C)

PROGRESSION

Progression from this course can lead you to study on our Hairdressing Level 3 Diploma or to an advanced apprenticeship at Level 3.

Successful completion will also provide you with the necessary skills and knowledge to continue as a Salon Assistant in the workplace.

HAIRDRESSING

LEVEL 3 DIPLOMA | 1 YEAR

ENTRY REQUIREMENTS

Hairdressing Level 2 Diploma and GCSEs grade 9-4 (A*-C) in English and Maths.

Assessment: A portfolio of practical work, exams and assignments.

Update and extend your hairdressing skills including advanced colouring techniques and cutting edge fashion work. You will take part in a variety of shows and competitions throughout the year to help develop your career to become a top stylist or hair trainer.

STUDIES INCLUDE

- Hairdressing techniques
- Colour hair using a variety of techniques
- Provide colour correction services
- Create a variety of permed effects
- Monitor procedures to safely control work operations
- Optional: Provide creative hair extension services (additional cost of approximately £250)

PROGRESSION

You will have the chance to progress into employment working in a salon or continue to develop your skills on a higher apprenticeship, Higher Education course at ESC or an undergraduate degree at university.



The Atrium
Hair, Beauty & Spa

The Atrium Salon & Spa is a fully operational training salon open to the public, staff and students offering an extensive range of hair, beauty and spa treatments at affordable prices.

Treat yourself to a new hair style or enjoy a rejuvenating spa treatment while you relax in our comfortable, contemporary salon.

BOOK YOUR APPOINTMENT TODAY!

020 8651 1131 EXT. 158
receptionhb@johnruskin.ac.uk

OPEN TERM TIME ONLY



THE ATRIUM FEATURES

- Spacious Hair Salons
- Beauty Salon
- Flotation Tank Room
- Sauna
- Steam Room
- Shower Room
- Tanning Room
- Manicure Desks
- Reception Area

HAIR & BEAUTY LEVEL 1 DIPLOMA | 1 YEAR

ENTRY REQUIREMENTS

5 GCSEs grade 9-3 (A*-D) including English and Maths or: Hairdressing Level 1 Diploma and GCSEs grade 9-3 (A*-D) in English and Maths

Assessment: A portfolio of practical work, exams and assignments

Develop your practical techniques in a broad range of women's hairdressing skills to become a junior stylist.

During this course you will develop a sound knowledge and understanding of the theory to each unit and gain the employability skills needed to become a successful hairdresser.

STUDIES INCLUDE

- Client consultation for hair services
- Colour and lighten hair
- Cut women's hair
- The art of dressing hair
- The art of colouring hair
- Applying make-up
- Create an image based on a theme within the hair and beauty sector
- Face painting and body art
- Period make-up
- Health and safety practice in the salon
- English and Maths (if not already achieved at GCSE grade 9-4/A*-C)

PROGRESSION

On successful completion of this course, you may progress to our Level 2 Diploma.

After completing this course you may gain employment or start an apprenticeship.

HAIR & MEDIA MAKE-UP LEVEL 2 DIPLOMA | 1 YEAR

ENTRY REQUIREMENTS

5 GCSEs grade 9-3 (A*-D) including English and Maths or: Level 1 Hairdressing or Beauty Diploma and GCSEs grade 9-3 (A*-D) in English and Maths

Assessment: A portfolio of practical work, exams and assignments

This qualification has been specifically designed to enable you to learn and develop your skills in both aspects of hairdressing and media make-up.

You will be taught the make-up techniques required to perform many professional media, fashion and catwalk looks whilst developing your hairdressing skills to complement your make-up designs.

STUDIES INCLUDE

- The art of photographic make-up
- The art of dressing hair
- Applying make-up
- Create an image based on a theme within the hair and beauty sector
- Face painting and body art
- Period make-up
- Health and safety practice in the salon
- English and Maths (if not already achieved at GCSE grade 9-4/A*-C)

PROGRESSION

On successful completion of this course, you may progress to our Level 3 Diploma.

After completing this course you may gain employment or start an apprenticeship in the TV and film industry as a make-up artist or in a cosmetic department.

HAIR & MEDIA MAKE-UP LEVEL 3 DIPLOMA | 1 YEAR

ENTRY REQUIREMENTS

Hair & Media Make-Up Level 2 Diploma, Art Level 3 or Art A Level and GCSEs grade 9-4 (A*-C) in English and Maths

Assessment: A portfolio of practical work, photographic evidence, exams and assignments

This qualification builds on existing knowledge and understanding of make-up artistry gained at Level 2 enabling you to expand your technical skills to prepare for a career as a make-up artist.

STUDIES INCLUDE

- Airbrush make-up for the face
- Camouflage make-up
- Fashion and photographic make-up
- Media make-up
- Fantasy hair design
- Style and fit postiche
- Creative hairdressing
- How to design and apply face and body art
- Provide eyelash and brow treatments

PROGRESSION

On successful completion of this course, you may apply for a University Level course.

After completing this course you may gain employment or start an apprenticeship in the TV and film industry as a make-up artist, in a salon or even as a freelance make-up artist.



BEAUTY THERAPY

LEVEL 2 DIPLOMA | 1 YEAR

ENTRY REQUIREMENTS

5 GCSEs grade 9-3 (A*-D) including English and Maths.

Or Level 1 Beauty Diploma and GCSEs grade 9-3 (A*-D) in English and Maths.

Assessment: A portfolio of practical work, exams and assignments.

Practising in our commercial salon you will develop the necessary knowledge, understanding and skills to provide facial skincare, eyelash and brow treatments, waxing techniques, manicure and pedicure treatments and applying make-up.

You will also develop the knowledge and skills required focusing on client care, and learn how to comply with health and safety requirements in professional salons.

STUDIES INCLUDE

- Facial skin care
- Eyelash and eyebrow treatments
- Hair removal using waxing techniques
- Make-Up application
- Health and safety practice in the salon
- Client care and communication in beauty related industries
- Manicure and pedicure treatments
- English and Maths (if not already achieved at GCSE grade 9-4/A*-C)

PROGRESSION

Upon successful completion you will have the skills to start work in a salon and/or progress to a Level 3 qualification at the College, building on your knowledge and working your way up to higher level work/study.



BODY & SPA THERAPY

LEVEL 3 DIPLOMA | 1 YEAR

56 UCAS Points (Grade D)

ENTRY REQUIREMENTS

Beauty Therapy Level 2 Diploma and GCSEs grade 9-4 (A*-C) in English and Maths

Assessment: A portfolio of practical work, exams and assignments

This course is ideal for those of you who wish to develop the advanced skills needed in Beauty & Spa Therapy.

It is a specialist vocational qualification and will involve both practical and theory classes.

During the practical lessons, you will work in a realistic salon environment and once you have reached a certain level of ability you will be expected to carry out beauty and spa therapy treatments on clients.

STUDIES INCLUDE

- Health & Safety practice in the salon
- Providing body massage treatments and self-tanning treatments
- Monitoring the operation of the Spa
- Providing body wrapping and flotation treatments
- Providing facial electrical treatments and body electrical treatments

PROGRESSION

Completion of this qualification could lead to employment as a Beauty & Spa Therapist working within a Salon, Spa, Health Club or aboard a Cruise ship.

Alternatively you can progress to study a Foundation Degree or HND.



MEET MEA

Hairdressing – Level 2

Why did you decide to study at JRC?

I've loved hairdressing since I was young. My friend recommended JRC so I came along to an Open Event. I really liked the green, calm environment and it offered the course I wanted.

What do you enjoy most about your course?

The best part is interacting with customers, meeting new people, getting to know them and figuring out together what hairstyle to do.

How are you finding the teaching/support?

The teaching's really good. All of our tutors have worked in the industry, and it feels like a motherly, nurturing environment.

HEALTH & SOCIAL CARE



If you want to work with adults in need of support with disabilities or health problems, you can develop the knowledge and experience for a rewarding career in the care sector.

We offer a wide range of courses from Level 1 through to Level 3. Whether you are looking to work with adults or young individuals, we can support your career aspirations.

We have close links with many local care settings, enabling our students to gain invaluable work experience and develop their practical skills. Our aim is to educate, train and equip students for progression into the industry.

All students will need to complete a DBS check before starting the course.

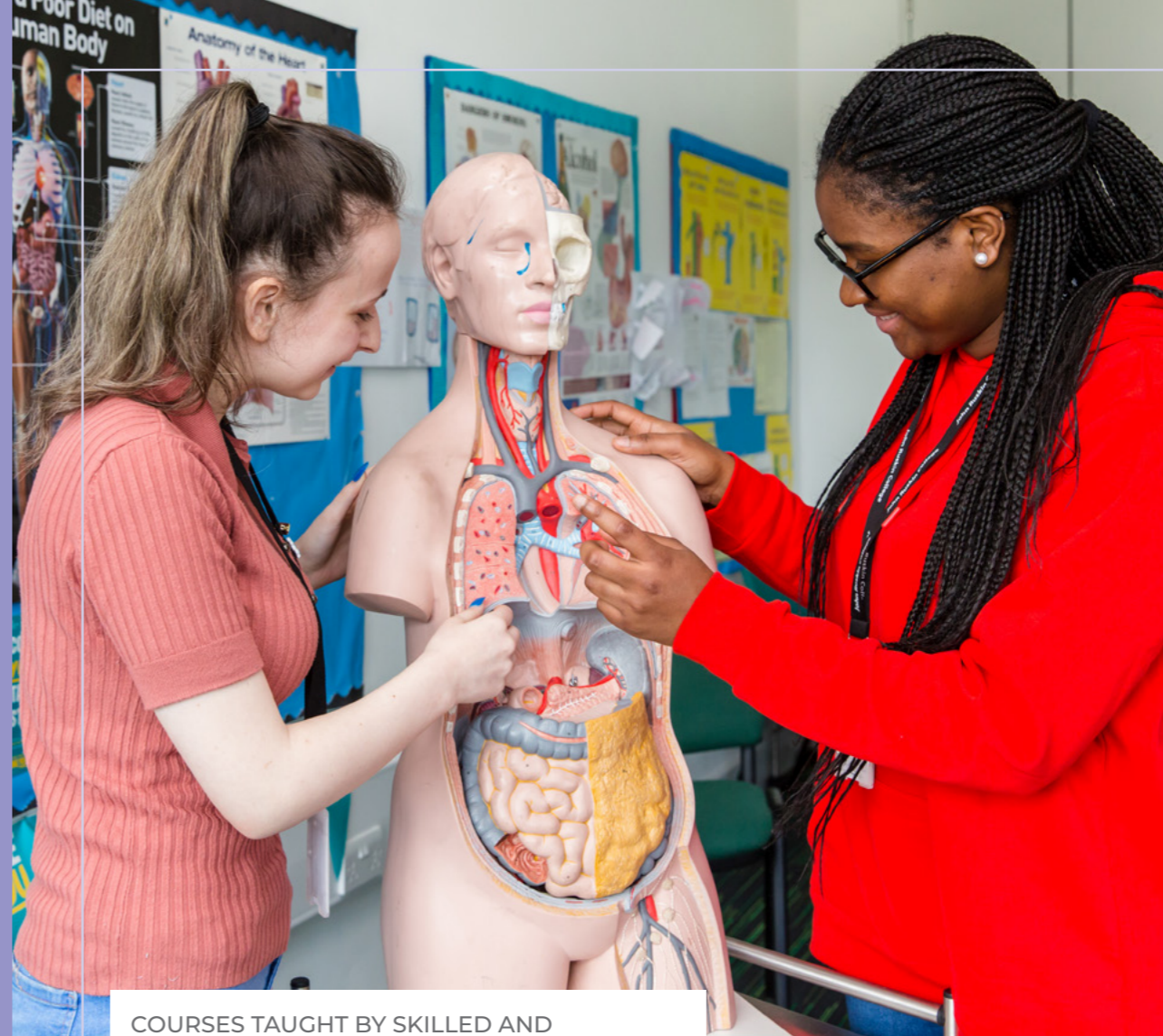
CAREER PATHS:

- › Care Assistant
- › Support Worker
- › Healthcare Assistant
- › Residential Care Worker
- › Home Care Aide
- › Social Worker
- › Nursing Assistant
- › Mental Health Support Worker
- › Community Outreach Worker
- › Rehabilitation Assistant
- › Care Coordinator
- › Dementia Care Specialist
- › Occupational Therapy
- › Palliative Care Worker
- › Activities Coordinator
- › Health Educator
- › Disability Support Worker
- › Family Support Worker

These roles offer a wide range of opportunities within the health and social care industry, allowing you to make a meaningful difference in people's lives.

THINKING ABOUT AN APPRENTICESHIP?

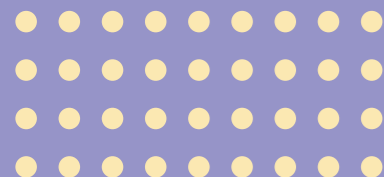
Check out the range of subjects we offer from Level 2 to Higher and Degree Level – page 14-15!



COURSES TAUGHT BY SKILLED AND DEDICATED TUTORS WITH INDUSTRY KNOWLEDGE

DEVELOP THE LISTENING, INTERPERSONAL AND COMMUNICATION SKILLS REQUIRED FOR THIS INDUSTRY

GAIN VALUABLE INSIGHT & EXPERIENCE TO HELP CARE FOR PEOPLE OF ALL AGES IN A WIDE RANGE OF WORK SETTINGS





HEALTH, SOCIAL CARE & CHILDCARE

LEVEL 1 DIPLOMA (NCFE CACHE)
1 YEAR

ENTRY REQUIREMENTS

4 GCSEs grade 9-2 (A*-E) including English and Maths.

A clean DBS check.

Assessment: Coursework.

This course offers an introduction into the health and social care environment and covers working with a wide range of client groups and the role played by workers. This ranges from principles and values through to health and safety and working with others.

This course will help you reach your full potential by encouraging and developing the personal skills and qualities needed to work in the health and social care sector.

STUDIES INCLUDE

- Safeguarding
- Introduction to learning disabilities
- Introduction to dementia
- Job opportunities in health and social care
- Working with others
- Personal and social skills
- English and Maths (if not already achieved at GCSE grade 9-4/A*-C)

PROGRESSION

After successfully passing the Level 1 Diploma, you could further develop your skills on our Health & Social Care Level 2 Extended Certificate qualification.

HEALTH & SOCIAL CARE

LEVEL 2 EXTENDED CERTIFICATE
1 YEAR

ENTRY REQUIREMENTS

5 GCSEs grade 9-3 (A*-D) including English and Maths; or Level 1 Diploma Merit/Distinction and GCSEs grade 9-3 (A*-D) in English and Maths.

A clean DBS check.

Assessment: Coursework, practical work placements and external exams.

This course has been designed for you if you are interested in working within the health or social care environment.

You will have the chance to build up your practical experiences through a work placement, where you are assessed to complete a vocational unit. This could mean working in a hospital or with the elderly, children or those with additional needs.

STUDIES INCLUDE

- Individual rights and needs in health and social care
- Safe environments in health and social care
- Healthy living
- Human lifespan development
- English and Maths (if not already achieved at GCSE grade 9-4/A*-C)

PROGRESSION

You will have the necessary skills and knowledge to work in entry level roles in the health and social care industry including Care Assistant, Ward Assistant or Residential Care Assistant. Many of our students have secured successful employment and apprenticeships in industry, with others progressing onto the Health & Social Care Level 3 Extended Diploma.

HEALTH

LEVEL 3 | 2 YEARS

➤ T LEVEL See page 16 for more info

168 UCAS Points (Grade D*D*D*)

ENTRY REQUIREMENTS

5 GCSEs grade 9-4 (A*-C) including English and Maths; or Level 2 Extended Certificate/Diploma Merit/Distinction and GCSEs grade 9-4 (A*-C) in English and Maths.

A clean DBS check.

Assessment: Coursework, externally set exams and practical work placements.

This is a practical, work related course. You will develop the core knowledge and skills that are needed for entry to a range of health occupations.

STUDIES INCLUDE

- Working within the health and science sector
- Health, safety and environmental regulations
- Managing information and data
- Principles of good scientific and clinical practice
- Core science concepts
- Understanding the healthcare sector
- Providing person-centred care
- Supporting health and wellbeing
- Human anatomy, physiology, diseases and disorders
- Infection prevention and control

PROGRESSION

Completing this T Level will allow you to progress to university level study in adult and children's nursing, mental health, youth work or public health or other allied health professions.

You may progress into employment or an apprenticeship across a wide range of healthcare career paths.



MEET REJOICE

Health & Social Care – Level 3

Why did you choose this course?

My mum was a Health Care Assistant and Carer in Ghana, which really influenced me. I really like looking after children and wanted to broaden my education and move into paediatric nursing.

JRC seemed so welcoming, calm and relaxed, so I joined in September 2021!

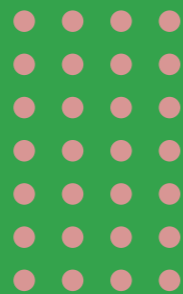
What do you enjoy about your course?

I really enjoy the group assignments and presentations, working as a team and sharing knowledge. Plus, we have speakers come in who help develop our learning.

What are your future plans?

I am hoping to go to university to study Paediatric Nursing.

PUBLIC SERVICES & SPORT



Our Public Services courses could lead to an exhilarating career in the Armed Forces, Emergency Services or Prison Services, or perhaps you are interested in sports coaching or personal training? These courses will help you reach your goal.

Our courses are designed to prepare you for entry into the Public Services or Sports sectors and will give you the experience and fitness levels you'll require in the future.

You'll be taught by our team of industry experienced tutors who will develop your communication, leadership and team working skills for progression onto Higher Education or future employment.

CAREER PATHS FOR PUBLIC SERVICES:

- > Police Officer
- > Firefighter
- > Paramedic
- > Prison Officer
- > Armed Forces Personnel
- > Border Force Officer
- > Search and Rescue Worker
- > Emergency Management Specialist
- > Community Support Worker
- > Security Officer

CAREER PATHS FOR SPORT:

- > Sports Coach
- > Physical Education Teacher
- > Personal Trainer
- > Sports Therapist
- > Sports Manager/Administrator
- > Sports Development Officer
- > Sports Marketing Specialist
- > Sports Journalist.
- > Sports Nutritionist
- > Sports Psychologist

These career paths offer a wide range of opportunities within the public services and sports sectors, catering to various interests and aspirations.

THINKING ABOUT AN APPRENTICESHIP?
 Check out the range of subjects we offer from Level 2 to Higher and Degree Level – page 14-15!



IN PERSON AND VIRTUAL TALKS BY EMERGENCY SERVICES AND ARMED FORCES

SPACIOUS AND WELL EQUIPPED GYM AND SPORTS HALL WHERE YOU WILL BE TAUGHT ALL PRACTICAL ELEMENTS

SPECIALLY DESIGNED COLLEGE SPORT AND PUBLIC SERVICES UNIFORM



PUBLIC SERVICES

LEVEL 2 EXTENDED CERTIFICATE
1 YEAR

ENTRY REQUIREMENTS

5 GCSEs grade 9-3 (A*-D) including English and Maths.

Assessment: Coursework, written exams and practical assessments.

This is a practical, work related course, which develops the necessary skills, knowledge and understanding to provide you with a sound, basic public services grounding.

This qualification will give you experience in a wide range of skills including leadership, teamwork and verbal and non-verbal communication. You will also complete work experience or a work based project during non-college days.

STUDIES INCLUDE

- Health and diet
- Leadership and teamwork
- Role and work of the public services
- Volunteering
- Fitness preparation
- Land based activities
- Outdoor expeditions
- English and Maths (if not already achieved at GCSE grade 9-4/A*-C)

PROGRESSION

On successfully completing this course you will have the opportunity to progress to Public Services Level 3 Extended Diploma.

You will also be prepared to take on an apprenticeship or other employment such as a career in the following areas: Police, fire and rescue services, ambulance service, Royal Navy, Royal Air Force or Army.

UNIFORMED PROTECTIVE SERVICES

LEVEL 3 EXTENDED DIPLOMA
2 YEAR

168 UCAS Points (Grade D*D*D*)

ENTRY REQUIREMENTS

5 GCSEs grade 9-4 (A*-C) including English and Maths or: BTEC NQF Level 2 Extended Certificate/ BTEC QCF Level 2 Diploma Merit/ Distinction and GCSEs grade 9-4 (A*-C) in English and Maths.

Assessment: Continued assessment through coursework and external examinations.

This course is disciplined, practical, and offers a wide range of subject areas that will prepare you for a career within the protective services industry. A variety of trips and visits are organised throughout your learning, including camping trips, indoor climbing, water based sports and expeditions. The course is continually assessed through assignments, practical based projects and external examinations. You will also take part in work experience or a work based project relevant to the subject area during your non-college days.

STUDIES INCLUDE

- Citizenship and diversity
- Behaviour and discipline
- Global affairs and the media
- Health and wellbeing
- Government and protective services
- Command and control

PROGRESSION

Continue your studies on our Public Services HNC at ESC, study at Degree Level or train for an apprenticeship. Career paths include: Police, Royal Navy or Army.

SPORT

LEVEL 1 INTRODUCTORY
DIPLOMA | 1 YEAR

ENTRY REQUIREMENTS

4 GCSEs grade 9-2 (A*-E) including English and Maths.

Assessment: Coursework and practical assessments.

The course is ideal as a first step for people with a keen interest in sport, who wish to progress into a career in the sport and leisure industry.

The topics covered on this course will provide you with a range of introductions to the body, exercise, practical sport and employment within sports industries. There will be an opportunity to complete qualifications in English and Maths, as well as participate in work experience or a work based project during non-college days.

STUDIES INCLUDE

- Being organised
- Developing a personal plan
- How exercise affects the body
- Playing sport
- Contributing to a sports event
- Keeping active and healthy
- English and Maths (if not already achieved at GCSE grade 9-4/A*-C)

PROGRESSION

Achieving and passing the course, as well as a good reference from the tutor, will allow you to move onto a Sport Level 2 Extended Certificate or another Level 2 course at the College. It can also lead to a range of jobs working in industries including but not limited to sport, outdoor and adventurous, social and youth work and events.

SPORT

LEVEL 2 EXTENDED CERTIFICATE
1 YEAR

ENTRY REQUIREMENTS

5 GCSEs grade 9-3 (A*-D) including English and Maths or Level 1 Diploma (Merit/Distinction) including GCSEs grade 9-3 (A*-D) in English and Maths.

Assessment: Coursework, computer based examinations and practical assessments.

This is a practical, work related course which develops skills, knowledge and understanding of the sport industry. Studying this qualification will give you experience in a wide range of skills from teamwork and communication to being able to assess someone's level of fitness. You will also complete work experience or a work based project during non-college days.

STUDIES INCLUDE

- Fitness for sport and exercise
- Practical performance in sport
- Anatomy and physiology
- Injuries in sport
- Principles of personal training
- The mind and sports performance
- Leading sports activities
- English and Maths (if not already achieved at GCSE grade 9-4/A*-C)

PROGRESSION

Successfully passing this course will allow you to move onto the Sport Level 3 Extended Diploma or another Level 3 course within the College depending on entry requirements. It can also lead to a range of industry-related jobs including but not limited to fitness instruction, coaching and event management.

Students in the past have gone onto various entry level job roles in industry or have taken on an apprenticeship in sport.

SPORT

LEVEL 3 EXTENDED DIPLOMA
2 YEARS

168 UCAS Points (Grade D*D*D*)

ENTRY REQUIREMENTS

5 GCSEs grade 9-4 (A*-C) including English and Maths or: BTEC NQF Level 2 Extended Certificate/ BTEC QCF Level 2 Diploma Merit/ Distinction and GCSEs grade 9-4 (A*-C) in English and Maths.

Assessment: Coursework, written examinations, synoptic assessment and practical assessments.

If you are interested in sport, this course will develop the necessary skills, knowledge and understanding to provide a successful progression route into the sport industry.

You will complete 14 units and go on a number of trips. In previous years trips such as taking part in professional sport science testing, water sports, rock climbing and further outdoor activities have provided the skills to progress further. You will also take part in work experience to further develop your skills and understanding within the sporting environment.

STUDIES INCLUDE

- Anatomy and physiology
- Fitness training and programming
- Professional development
- Sports leadership
- Application of fitness testing
- Practical sports performance

PROGRESSION

Successful completion of this two-year programme could lead to studying a Sport and Exercise Science Higher National Certificate at ESC, higher education degree course at university or employment in sports development or the fitness industry.



MEET VANDO

Sports – Level 3

Why did you choose this course?

I've always had an interest in Sport. My brother studied at JRC and recommended it so I started on an ESOL course.

What do you enjoy most about your course?

I enjoy the mix of theory and practical and find learning about the human body and psychology interesting.

Have you done any work experience during this course?

I did work experience at Selsdon Primary School, shadowing the Sports coach and supervising groups of children doing activities and tournaments.

I love working with children, sharing my love of sport, inspiring them and spotting talent – it's amazing!

LIFE SKILLS – ESOL

ENGLISH FOR SPEAKERS OF OTHER LANGUAGES)

If English is not your first language, an ESOL course could really help you improve your English Language skills. You can develop reading, writing and speaking skills while broadening your English vocabulary.

Our ESOL (English for Speakers of Other Languages) course, designed to empower individuals like you with the language skills needed to thrive in an English-speaking environment. Whether you're new to England or looking to enhance your language abilities, our program is here to provide you with the tools and confidence to navigate daily life, pursue further education, and succeed in your career aspirations.

OUR ESOL COURSES WILL SUPPORT THE FOLLOWING AREAS:

- Language Proficiency
- Enhanced Communication
- Access to Opportunities
- Empowerment in Daily Life
- Cultural Engagement
- Future Education
- Study and Work Readiness
- Employment Opportunities
- Confidence and Empowerment

Join us on this journey to not only learn English but also discover new horizons and opportunities that await you in education and employment

THINKING ABOUT AN APPRENTICESHIP?

Check out the range of subjects we offer from Level 2 to Higher and Degree Level – page 14-15!



INTERACT AND MAKE FRIENDS FROM DIFFERENT COUNTRIES AND CULTURES

TRANSFERABLE SKILLS THAT CAN BE USED IN OTHER COLLEGE FULL-TIME COURSES OR FUTURE EMPLOYMENT

SPECIALISED TEACHING IN ENGLISH AND MATHS FROM SKILLED TUTORS, WITH PROJECTS TAILORED JUST FOR YOU





ENGLISH FOR SPEAKERS OF OTHER LANGUAGES (ESOL)

ENTRY LEVEL 1, 2 & 3 | 1 YEAR

ENTRY REQUIREMENTS

Entry Requirements: These qualifications are for 16-18 year olds only. When you are interviewed you will have an assessment to ensure you are placed on the right course level.

Assessment: ESOL exams.

On this course you will study the English language and citizenship themes whilst improving your grammar, speaking and listening skills, and writing (formal and informal).

As part of your learning, you will complete an Ascentis Entry Level 3 award in Employment, Digital and Community Engagement Skills for English Language learners; preparing you to continue in education and improve your employability and digital skills.

STUDIES INCLUDE

- Speaking, listening, reading and writing skills
- Employability and personal development
- Communication
- Functional Skills Maths

PROGRESSION

Once you have completed this course you can progress to ESOL Level 1 which will then provide the opportunity to progress onto other vocational courses within the College. You will also increase your employment prospects.

ENGLISH FOR SPEAKERS OF OTHER LANGUAGES (ESOL)

LEVEL 1 | 1 YEAR

ENTRY REQUIREMENTS

Successful completion of Entry Level 3 ESOL Grade: Pass

Assessment: Coursework and exams.

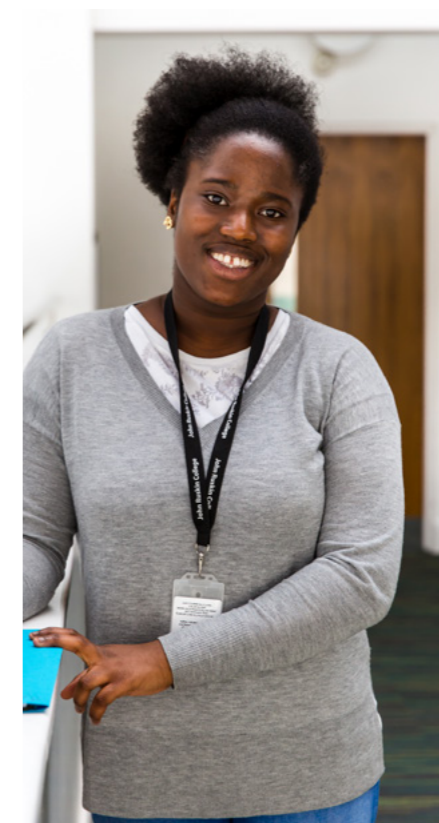
This course will enable you to develop your reading, writing, speaking and listening skills and will support your progression onto vocational courses or employment.

STUDIES INCLUDE

- Speaking, listening, reading and writing skills
- Employability and personal development
- Functional Skills/GCSE Maths
- Team building through our enrichment programmes such as art classes and sporting activities
- Work experience

PROGRESSION

Successful completion of this course will allow you to continue your learning on a Full-time vocational course at the College in a subject you are interested in. Alternatively, you can also seek employment or take on an Apprenticeship so you can earn while you learn.



MEET KADIATOU

ESOL – ENTRY LEVEL 3

Why did you choose this course?

I chose this course because I wanted to understand the language and culture of people with different backgrounds.

How are you finding the teaching/support?

My teachers are very good and helpful. They've encouraged and supported me to be the best I can be which has helped me build my confidence.

What are your future plans?

I'm planning to study **Health & Social Care** at JRC, then further my studies at university, specialising in midwifery.

LIFE SKILLS – SEND



We understand everyone has different needs, so we work closely with parents and students to support you to select the right programme.

Our courses are designed to help you reach your full potential and enhance your life skills. Our specialist pathways develop the confidence, skills and knowledge you will need to progress onto independent living, employment or further study.

You will have opportunities to take part in food preparation, IT, communication and team building activities. You will also develop Maths and English skills and take qualifications in functional skills or GCSEs if appropriate.

The majority of our students will be fully integrated into College life. Students on our SEND courses are invited to take part in a range of College activities including sports, the annual Freshers' Fair and Job Fair.

COURSES INCLUDE:

- › Art & Enterprise
- › Communication Skills
- › Computer Skills
- › Employability Skills
- › Healthy Living Skills
- › Independent Living Skills
- › Numeracy & Literacy
- › Team Work

THINGS TO NOTE BEFORE YOU START

Financial help may be available. Please contact our Client Services team on 01737 788444 for more information.

THINKING ABOUT AN APPRENTICESHIP?

Check out the range of subjects we offer from Level 2 to Higher and Degree Level – page 14-15!

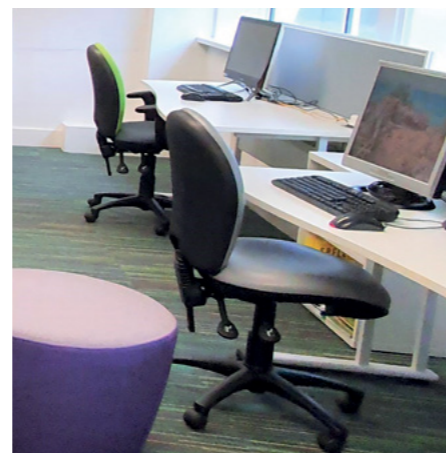


OUR SEND TEAM WORK CLOSELY WITH PARENTS AND STUDENTS TO DEVELOP SPECIALIST PROGRAMMES

SPECIALIST TUTORS AND ASSISTANTS ARE ON HAND TO SUPPORT STUDENTS WITH SPECIAL EDUCATIONAL NEEDS AND DISABILITIES

WE OFFER TAILORED & SPECIFIC SUPPORT TO MEET A WIDE RANGE OF PERSONAL & EDUCATIONAL NEEDS





THE HIVE ADDITIONAL LEARNING SUPPORT AREA

The Hive is an area within our LRC which provides a calm relaxed space for our students with Additional Learning Support needs.

Equipped with comfortable seating, computers and calming bean bag area, it is a great space for quiet learning and to receive extra support from our specialist staff.



LEAP

ENTRY REQUIREMENTS

There are no specific entry requirements for this course.

This course is ideal for those learners who are not yet certain of whether they would like a vocational FE pathway, or move into employment. It is designed to explore personal skills and strengths and develop confidence.

Students will study 8 units designed to develop skills, knowledge and behaviours required within a broad range of employment sectors.

This course also includes the study of Maths and English where students can gain qualifications to support movement into employment or onto vocational FE courses.

PROGRESSION

Once you have successfully completed this course, you can progress onto other Life Skills courses or Level 1 courses at JRC.

PLEASE NOTE, this course starts after the October half term.

SKILLS FOR INDEPENDENCE & WORK

ENTRY REQUIREMENTS

EHCP, Interview and assessment Assessment: Coursework

The course is designed to help students who want to develop their independent living skills, confidence, self-esteem, social and communication skills in preparation for life or work.

Students will also develop English and Maths as part of the course.

STUDIES INCLUDE

- Developing independent living skills
- Developing skills required in the workplace
- Healthy living, fitness and leisure
- Cooking at home
- Personal and social development

PROGRESSION

Following successful completion of this course, you can move onto our Entry Level 3 course, Preparing for Independent Living & Employment.

PREPARING FOR INDEPENDENT LIVING & EMPLOYMENT

ENTRY REQUIREMENTS

EHCP, Interview and assessment Assessment: Coursework

This course is designed to provide students with the opportunity to develop the skills required for independent living and future employment.

Units include Communication, Health Needs, Problem-Solving, Dealing with Queries & Requests and Career Progression; helping students to continue to develop the skills in these areas.

Students will also develop English and Maths as part of the course.

STUDIES INCLUDE

- Self-assessment
- Team working
- Self management
- Career progression
- Professional behaviour

PROGRESSION

Upon successful completion of this course, you can go onto a Supported Internship course at East Surrey College, Redhill, or start a Level 1 vocational course at JRC which suits your interests.

HOW TO APPLY

WE'RE DELIGHTED THAT YOU WANT TO JOIN JOHN RUSKIN COLLEGE. CHECK OUT OUR STEP-BY-STEP GUIDE TO THE APPLICATION PROCESS.

Why not come to one of our Open Events to see the facilities, meet the tutors and ask any questions that you may have (see page 2 for details).

APPLYING FOR A PLACE

Think about your personal ambitions, your abilities and your preferences. Have a good look through this guide and see what's on offer. Once you have found a subject you would love to study, visit www.johnruskin.ac.uk and search for your course of interest and click the 'Apply' button on the course. You will be taken to our online application form where you will need to register an account.

ONCE YOU'VE APPLIED

Information, Advice & Guidance Interview

After applying, you'll be invited to the College for an Information, Advice and Guidance interview where we'll discuss all aspects of your chosen course.

This is an important opportunity to ensure that this is the right course for you and for us to fully explain the details and requirements of the course.

HOW TO FIND US

WALKING The College is a 40-minute walk from Addington Central Parade and 20-minute walk from Addington Road, Selsdon.

CYCLING Covered cycle racks are provided on-site.

BY TRAM Line 3 runs from central Croydon via Gravel Hill to New Addington – alight at Gravel Hill.

BY TRAIN Accessible from East Croydon, West Croydon and South Croydon stations.

BY BUS Bus 64 and 359 stops directly outside the College. Buses 130, 314, 353, 433 and 466 stop near the College.

DRIVING Easily accessible from the A212, A232 and A2022. Free parking is available on nearby residential roads.

THE OFFER

If you're successful you'll be offered a conditional place which will be confirmed during enrolment when you provide your exam results. Adult students with appropriate qualifications are usually offered unconditional places.

ENROLMENT

You'll be invited to enrol at the College in the summer. If you didn't do as well as you hoped in your exams – don't panic. We will work to offer you a more appropriate course, often leading to your first choice at a later date. If you did better than you expected, we will be able to discuss with you the option of progressing directly on to a higher level.

COURSE INDEX

APPLIED SCIENCE

Applied Science Level 2
Applied Science Level 3

AVIATION, TRAVEL & TOURISM

Cabin Crew, Travel & Tourism Level 2
Travel & Tourism Level 3

BUSINESS, ACCOUNTING & IT

Accounting T Level
Business Level 1
Business Level 2
Business Level 3
Management & Administration T Level
Information Technology Level 1
Information Technology Level 2
Computing Level 3
Digital Production, Design & Development T Level

CONSTRUCTION

Construction Multi-Skills Level 1
Electrical Installation Level 2
Design, Surveying & Planning for Construction T Level
Carpentry & Joinery Level 1
Carpentry & Joinery Level 2
Painting & Decorating Level 1
Painting & Decorating Level 2
Plumbing Level 1
Plumbing Level 2

20 CREATIVE ARTS

22 Art & Design Level 2
23 Creative Media Level 3

24 EARLY YEARS & CHILDCARE

26 Early Years Practitioner Level 2
26 Education & Childcare T Level
27

ENGINEERING

28 Engineering Level 2
30 Engineering Level 3
30 Design & Development for Engineering & Manufacturing T Level
31

HAIR, BEAUTY, MAKE-UP & SPA

32 Hairdressing, Barbering & Beauty Therapy Level 3
32 Hair & Beauty Skills Level 1
33 Hairdressing Level 2
33 Hairdressing Level 3
33 Hair & Beauty Level 1
34 Hair & Media Make-Up Level 2
36 Hair & Media Make-Up Level 3
37 Beauty Therapy Level 2
37 Body & Spa Therapy Level 3

38 HEALTH & SOCIAL CARE

38 Health, Social Care & Childcare Level 1
38 Health & Social Care Level 2
39 Health T Level

42 PUBLIC SERVICES & SPORT

45 Public Services Level 2
45 Uniformed Protective Services Level 3
46 Sport Level 1
49 Sport Level 2
49 Sport Level 3

50 LIFE SKILLS – ESOL

52 ESOL Entry Level 1, 2 & 3
53 ESOL Level 1

LIFE SKILLS – SEND

53 LEAP
54 Skills for Independence & Work
54 Preparing for Independent Living & Employment

66

68

68

68

69

69

70

72

73

74

77

77

77

77

77

77

77

79

59

60

61

62

64

65

65

65

41

41



John Ruskin College
Selsdon Park Road
South Croydon
CR2 8JJ

Email: clientservices@johnruskin.ac.uk
Switchboard: 020 8651 1131
www.johnruskin.ac.uk

FOLLOW US



DISCLAIMER

Every effort has been made to ensure that the details included in this guide are up-to-date and accurate at the time of printing. However, the College reserves the right to alter or cancel courses, their content, entry requirements or other details should circumstances dictate.